

DEUTSCH Sealing Plugs

DEUTSCH | DEUTSCH HD, DEUTSCH HD30

[View on TE.com >](#)



Open cavities compromise environmental protection, confirm all open cavities are filled with sealing plugs.



[Connectors >](#) [Connector Accessories >](#) [Connector Seals & Cavity Plugs](#)

DEUTSCH sealing plugs are non-conductive dummy pins that are inserted to fill an open cavity in a connector. Sealing plugs are required to maintain the integrity of the environmental seal.



Operating Temperature (Max): 125 °C

Contains Lubricant: No

Operating Temperature Range: -55 - 125 °C

Features

Product Type Features

Connector Seal & Plug Type	Cavity Plug, Keying Plug, Locking Plug, Wire Seal
----------------------------	---

Configuration Features

Number of Positions	1
---------------------	---

Body Features

Primary Product Material	PBT, VMQ
Primary Product Color	Blue, Red, Red-Orange, White, Yellow

Usage Conditions

Operating Temperature (Max) (°C)	125
Operating Temperature (Max) (°F)	257
Operating Temperature Range (°C)	-55 - 125
Operating Temperature Range (°F)	-67 - 257

Industry Standards

UL Flammability Rating	UL 94V-0
------------------------	----------

Packaging Features

Packaging Quantity	1, 5000, 8000, 20000
--------------------	----------------------

Packaging Method	Box
------------------	-----

Other

Resistance to Hydrocarbons	Good
----------------------------	------

Contains Lubricant	No
--------------------	----

Reference Number

TE Internal Number	CAT-D48-SP729
--------------------	---------------

SEE PRODUCTS ON NEXT PAGE

Products (1 of 3)



SEALING PLUG, SIZE 20,
KEYING, RED



SEALING PLUG, SIZE 12,
KEYING, YEL



SEALING PLUG, SIZE 16,
KEYING, WHT



INSERT SEAL, CRIMP
SLEEVE REDUCER

TE Part #	0413-216-2005	0413-214-1205	0413-215-1605	0410-241-0406
Connector Seal & Plug Type	Keying Plug	Keying Plug	Keying Plug	Wire Seal
Primary Product Material	PBT	PBT	PBT	VMQ
Primary Product Color	Red	Yellow	White	Red-Orange
Resistance to Hydrocarbons	Good	Good	Good	
Number of Positions				1
EU RoHS Directive 2011/65 /EU	EU RoHS Compliant	EU RoHS Compliant	EU RoHS Compliant	EU RoHS Compliant
EU ELV Directive 2000/53/EC	EU ELV Compliant	EU ELV Compliant	EU ELV Compliant	EU ELV Compliant
Product Families	DEUTSCH	DEUTSCH	DEUTSCH	DEUTSCH
Series	DEUTSCH HD,DEUTSCH HD30	DEUTSCH HD,DEUTSCH HD30	DEUTSCH HD,DEUTSCH HD30	DEUTSCH HD,DEUTSCH HD30

***EU RoHS Directive 2011/65/EU**

These products comply with the substance restrictions of the Restriction on Hazardous Substances Directive 2011/65/EU (RoHS2). The RoHS2 Directive requires that certain electrical and electronic equipment products do not contain mercury, cadmium, hexavalent chromium, PBB, PBDE, lead, DEHP, BBP, DBP and DIBP above defined thresholds. Products indicated as 'Compliant' do not contain any of these substances above the prohibition thresholds. Finished electrical and electronic equipment products will be CE marked as required by the Directive. Components may not be CE marked.

****EU ELV Directive 2000/53/EC**

These products comply with the substance restrictions of the End of Life Vehicles Directive 2000/53/EC (ELV). The ELV Directive requires that materials and components of vehicles do not contain mercury, cadmium, hexavalent chromium, and lead above defined thresholds. Products indicated as 'Compliant' do not contain any of these substances above the prohibition thresholds.

Products (2 of 3)



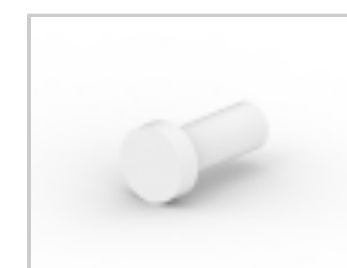
SEALING PLUG, SIZE 16, BLU



SEALING PLUG, SIZE 20, RED



SEALING PLUG, SIZE 4, WHT



SEALING PLUG, SIZE 8, WHT

TE Part #	0413-003-1605	0413-204-2005	114019-ZZ	114018-ZZ
Connector Seal & Plug Type	Cavity Plug	Cavity Plug	Cavity Plug	Cavity Plug
Primary Product Material	PBT	PBT	PBT	PBT
Primary Product Color	Blue	Red	Red-Orange	White
Resistance to Hydrocarbons	Good	Good	Good	Good
Number of Positions				
EU RoHS Directive 2011/65 /EU	EU RoHS Compliant	EU RoHS Compliant	EU RoHS Compliant	EU RoHS Compliant
EU ELV Directive 2000/53/EC	EU ELV Compliant	EU ELV Compliant	EU ELV Compliant	EU ELV Compliant
Product Families	DEUTSCH	DEUTSCH	DEUTSCH	DEUTSCH
Series	DEUTSCH HD,DEUTSCH HD30	DEUTSCH HD,DEUTSCH HD30	DEUTSCH HD,DEUTSCH HD30	DEUTSCH HD,DEUTSCH HD30

***EU RoHS Directive 2011/65/EU**

These products comply with the substance restrictions of the Restriction on Hazardous Substances Directive 2011/65/EU (RoHS2). The RoHS2 Directive requires that certain electrical and electronic equipment products do not contain mercury, cadmium, hexavalent chromium, PBB, PBDE, lead, DEHP, BBP, DBP and DIBP above defined thresholds. Products indicated as 'Compliant' do not contain any of these substances above the prohibition thresholds. Finished electrical and electronic equipment products will be CE marked as required by the Directive. Components may not be CE marked.

****EU ELV Directive 2000/53/EC**

These products comply with the substance restrictions of the End of Life Vehicles Directive 2000/53/EC (ELV). The ELV Directive requires that materials and components of vehicles do not contain mercury, cadmium, hexavalent chromium, and lead above defined thresholds. Products indicated as 'Compliant' do not contain any of these substances above the prohibition thresholds.

Products (3 of 3)



SEALING PLUG, SIZE 16, LOCKING, WHT



SEALING PLUG, SIZE 12/16, WHT

TE Part #	0413-217-1605	114017-ZZ
Connector Seal & Plug Type	Locking Plug	Cavity Plug
Primary Product Material	PBT	PBT
Primary Product Color	White	White
Resistance to Hydrocarbons	Good	Good
Number of Positions		
EU RoHS Directive 2011/65/EU	EU RoHS Compliant	EU RoHS Compliant
EU ELV Directive 2000/53/EC	EU ELV Compliant	EU ELV Compliant
Product Families	DEUTSCH	DEUTSCH
Series	DEUTSCH HD,DEUTSCH HD30	DEUTSCH HD,DEUTSCH HD30

***EU RoHS Directive 2011/65/EU**

These products comply with the substance restrictions of the Restriction on Hazardous Substances Directive 2011/65/EU (RoHS2). The RoHS2 Directive requires that certain electrical and electronic equipment products do not contain mercury, cadmium, hexavalent chromium, PBB, PBDE, lead, DEHP, BBP, DBP and DIBP above defined thresholds. Products indicated as 'Compliant' do not contain any of these substances above the prohibition thresholds. Finished electrical and electronic equipment products will be CE marked as required by the Directive. Components may not be CE marked.

****EU ELV Directive 2000/53/EC**

These products comply with the substance restrictions of the End of Life Vehicles Directive 2000/53/EC (ELV). The ELV Directive requires that materials and components of vehicles do not contain mercury, cadmium, hexavalent chromium, and lead above defined thresholds. Products indicated as 'Compliant' do not contain any of these substances above the prohibition thresholds.

Related Materials

Flipbook Catalog

Industrial & Commercial Transportation - Terminals and Connectors (English)

TE's Industrial & Commercial Transportation Terminals and Connectors flipbook catalog features AMPSEAL, AMPSEAL 16, Circular DIN, DEUTSCH, HDSCS, LEAVYSEAL, and Superseal 1.0 connectors, contacts, tools, and accessories.

English

Connector Selector

Connector Selector (English)

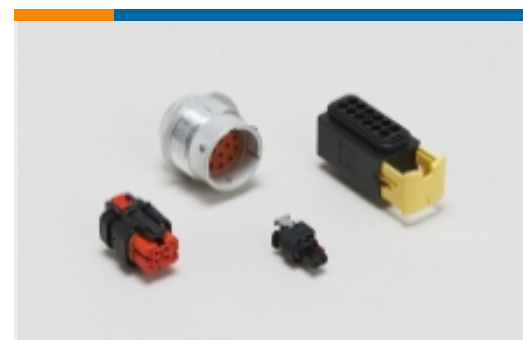
The Connector Selector is a reference guide to TE Connectivity's (TE) Industrial & Commercial Transportation electrical connectors.

English

Also in the Series | DEUTSCH HD



Automotive Connector Caps & Covers (32)



Automotive Housings(742)



Connector Backshells(29)



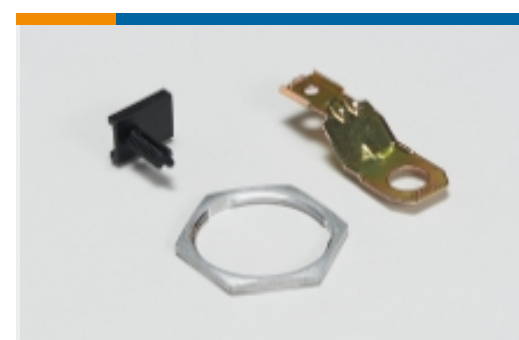
Connector Seals & Cavity Plugs(10)



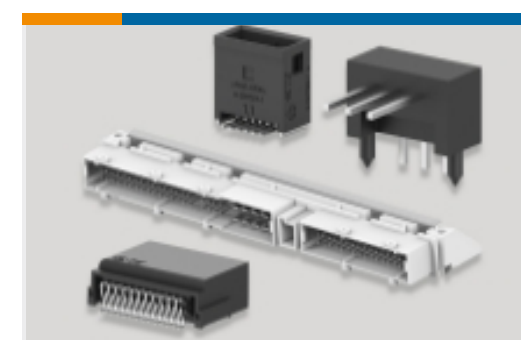
Connector Strain Relief(5)



Insertion & Extraction Tools(11)



Other Automotive Connector Accessories(11)



PCB Headers & Receptacles(1)

Also in the Series | DEUTSCH HD30



Automotive Connector Caps & Covers (14)



Automotive Housings(359)



Connector Backshells(2)



Connector Seals & Cavity Plugs(11)



Connector Strain Relief(5)



Insertion & Extraction Tools(10)



Other Automotive Connector Accessories(6)

DEUTSCH, TE Connectivity, and TE connectivity (logo) are trademarks.