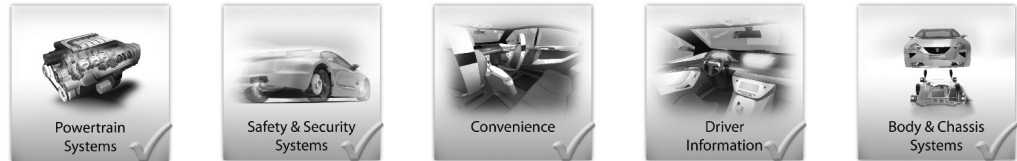
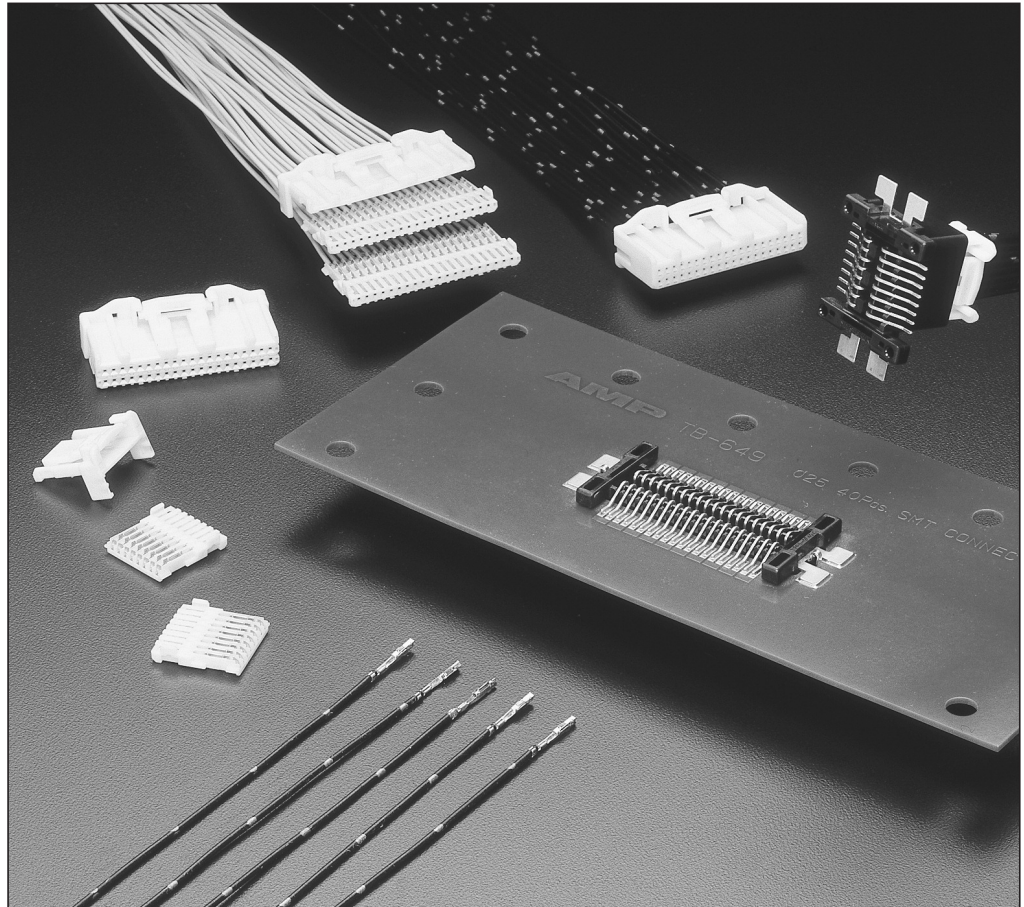


Introduction



The .025 (0.64 mm) IDC Connector Series Connectors are High-Density Connectors for Automotive Applications such as ECU and Down Sized Wire Harnesses



Product Features

- Connectors for automotive applications suitable for high density mountings
- Designed to resist deformation of contacts by scooping at mating/unmating
- Low insertion force contacts optimized to tolerate fretting corrosion
- Secondary-locks prevent half-mating of connector halves and increase connector retention force
- Without closing double locks, connectors can not mate
- Many numbers of positioned housings will be available

Applications

- Generic Control Modules
- Unsealed Harness Wiring
 - Inline Connections
 - Instrument Panel
 - Audio
 - Mirror
 - Switches
 - Actuators
 - Overhead Consoles

Product Offering

- Tin and Gold Plating
- Wire-to-Wire, Wire-to-Board
- Unsealed
- Hand Mate

Receptacle Contacts

Technical Features

Contact Material:

Copper Alloy

Contact Finish:

Post-tinned,
Pre-tin plated,
Selective gold plated

Wire Size Range:

0.08–0.50 mm²

Current Rating:

3 A max.

Temperature Range:

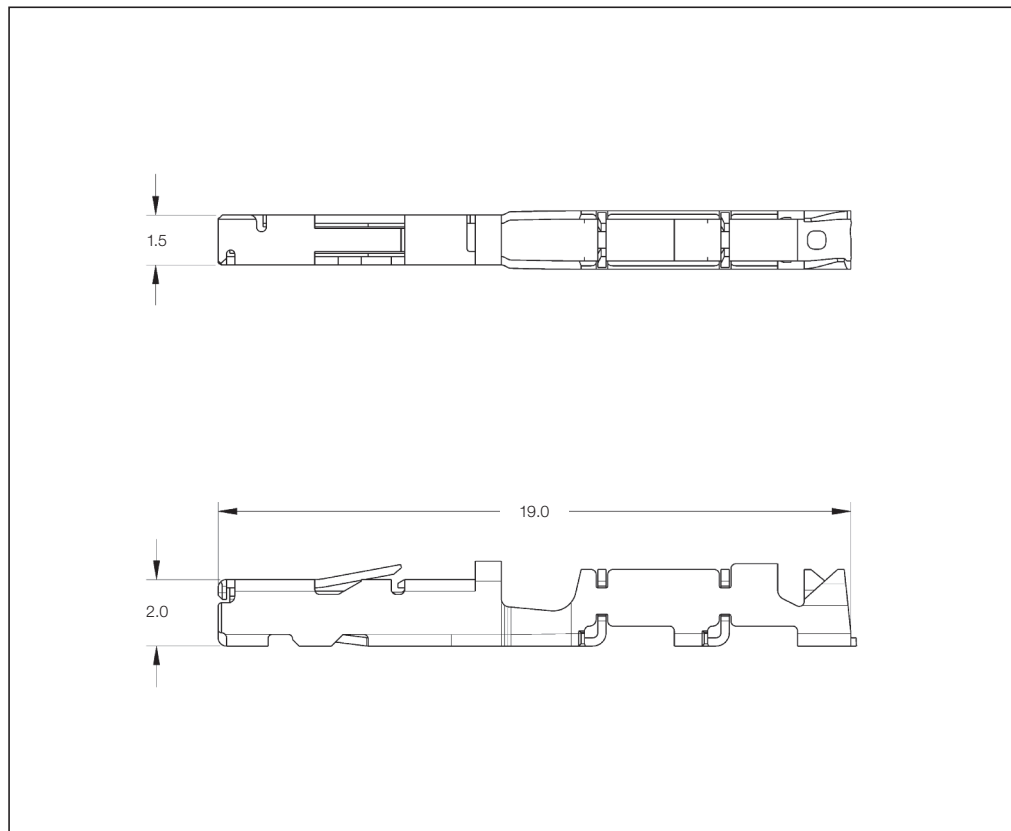
–30 °C to +80 °C

Product Specification:

108-5660, 108-5668

Application Specification:

114-5276



Receptacle Contacts

Wire Size Range (mm ²)	Insulation Diameter (mm)	Material and Finish	Part Numbers					
			Strip Form	Package Quantity	Loose-Piece	Package Quantity	Applicator	Hand Tool
0.08-0.14	1.1–1.4	Copper Alloy, Post-tinned	1565403-1	32,000	N/A	–	*	N/A
0.22	0.8–1.2	Copper Alloy, Post-tinned	1565404-1	32,000	N/A	–	*	N/A
0.3-0.5	1.10–1.35	Copper Alloy, Post-tinned	1318688-1	24,000	N/A	–	*	N/A

*) Please consult TE Connectivity for further informations.

Pin Contacts

Technical Features

Contact Material:

Brass,
Copper Alloy

Contact Finish:

Post-tinned,
Pre-tin plated,
Selective gold plated

Wire Size Range:

0.08–0.50 mm²

Current Rating:

3 A max.

Temperature Range:

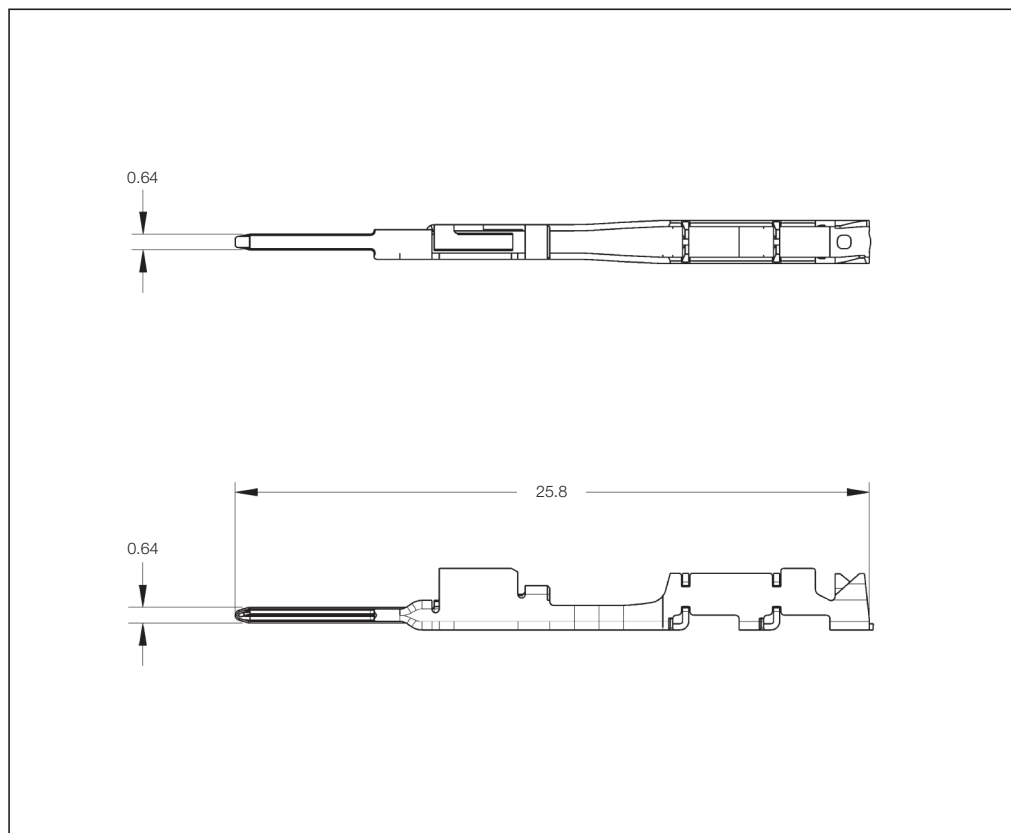
–30 °C to +80 °C

Product Specification:

108-5660, 108-5668

Application Specification:

114-5276



Pin Contacts

Wire Size Range (mm ²)	Insulation Diameter (mm)	Material and Finish	Part Numbers					
			Strip Form	Package Quantity	Loose-Piece	Package Quantity	Applicator	Hand Tool
0.08-0.14	1.1–1.4	Copper Alloy, Post-tinned	1473818-1	24,000	N/A	–	*	N/A
0.22	0.8–1.2	Copper Alloy, Post-tinned	1565406-1	24,000	N/A	–	*	N/A

*) Please consult TE Connectivity for further informations.

Receptacle Housings

Technical Features

No. of Positions:

4 Positions

Housing Material:

PBT

Wire Size Range:

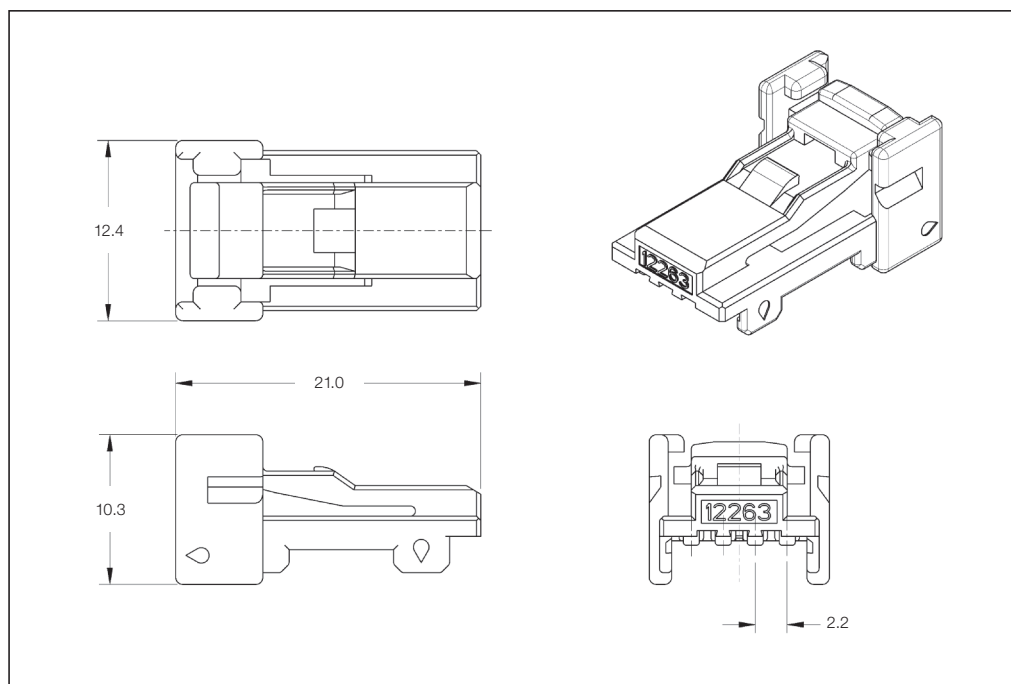
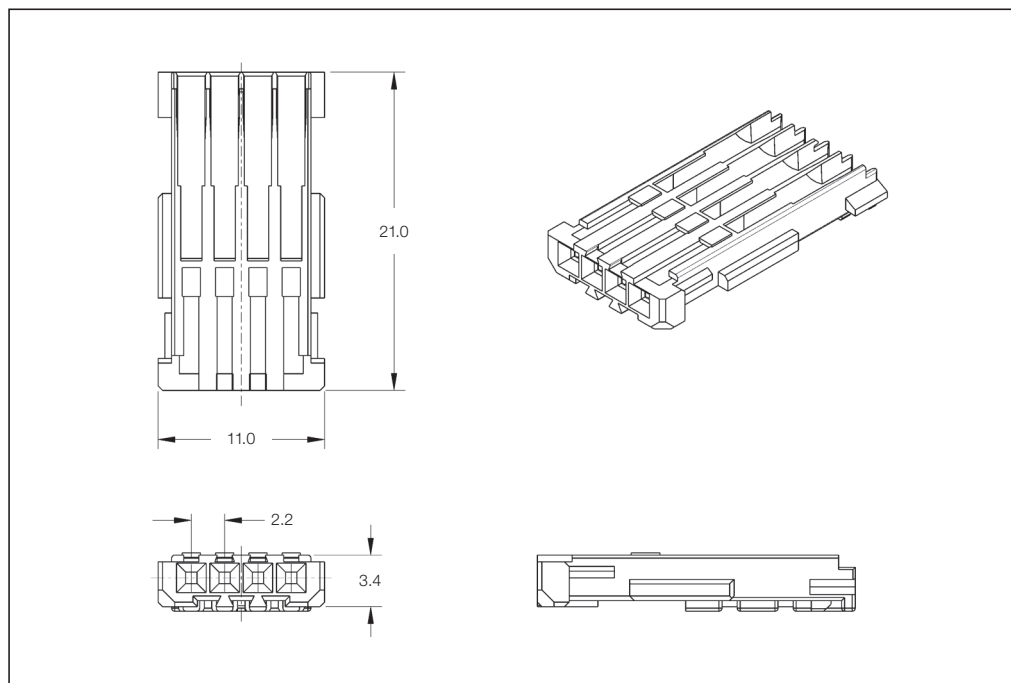
0.08–0.50 mm²

Product Specification:

108-5660

Application Specification:

114-5276



4 Position Receptacle Housings

No. of Positions	Keying Options	Housing Color	Part Numbers						
			Sub-Plug	Cover	Lock Housing	Cover and Lever	Mating Pin Housing	Mating PCB Header Right-Angle	Mating PCB Header Vertical
4	–	Natural	1473800-1	–	1473801-1	–	1473790-1	–	1473790-1
			1717248-1*						

*) Receptacle pre-inserted

Receptacle Housings

Technical Features

No. of Positions:

8 Positions

Housing Material:

PBT

Wire Size Range:

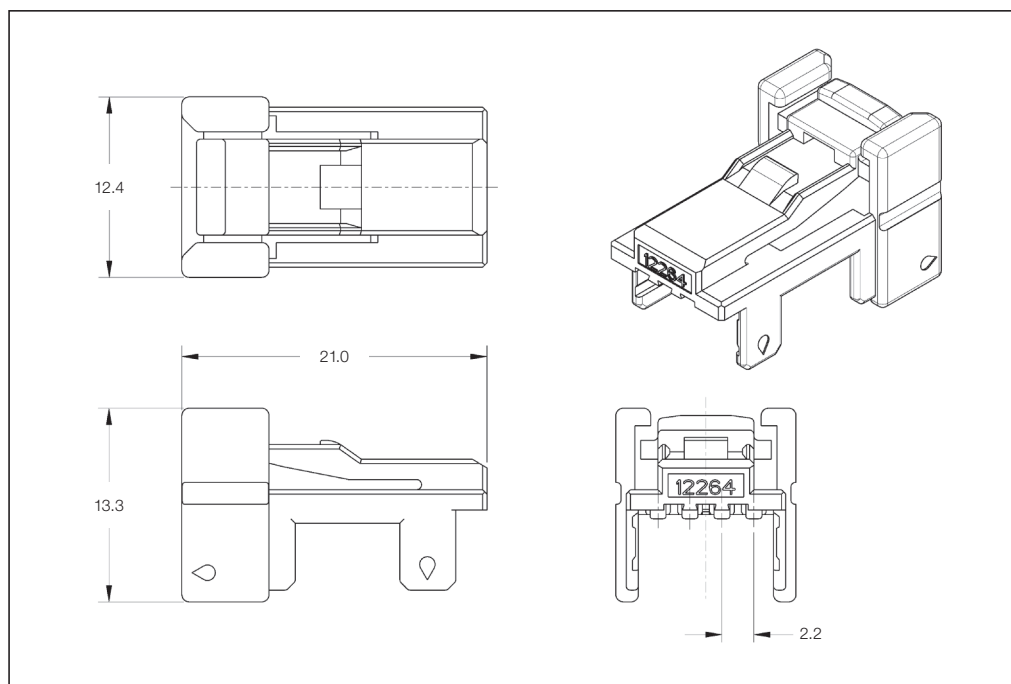
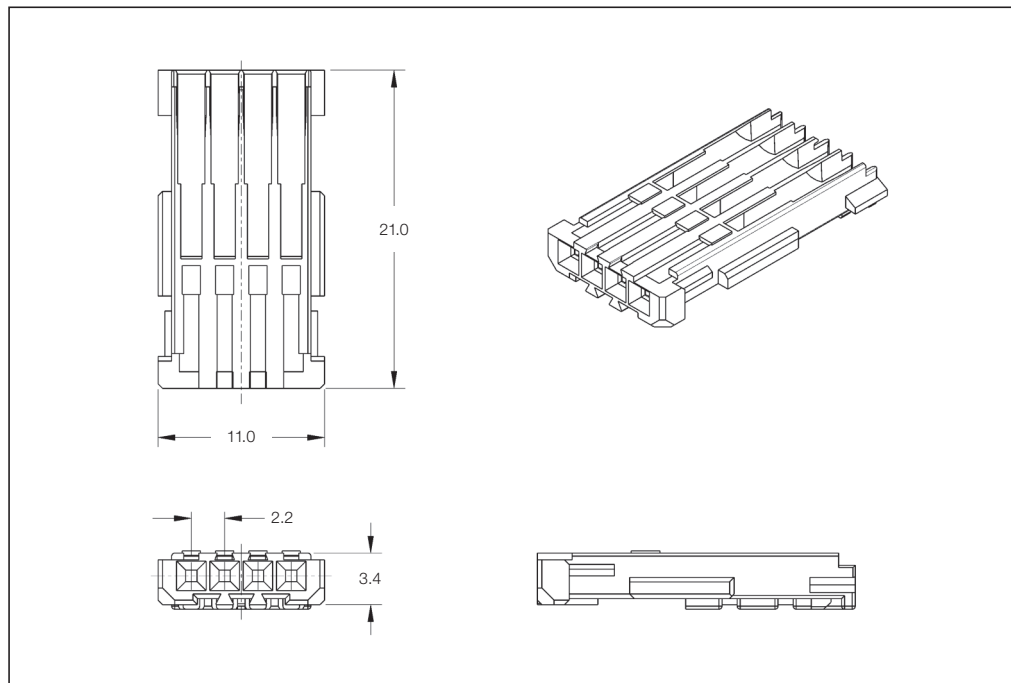
0.08–0.50 mm²

Product Specification:

108-5660

Application Specification:

114-5276



8 Position Receptacle Housings

No. of Positions	Keying Options	Housing Color	Part Numbers						
			Sub-Plug (Needs 2)	Cover	Lock Housing	Cover and Lever	Mating Pin Housing	Mating PCB Header Right-Angle	Mating PCB Header Vertical
8	–	Natural	1473800-1	–	1473802-1	–	1473793-1	1376350-x see customer drawing	–
			1717248-1*						

*) Receptacle pre-inserted

Receptacle Housings

Technical Features

No. of Positions:

12 Positions

Housing Material:

PBT

Wire Size Range:

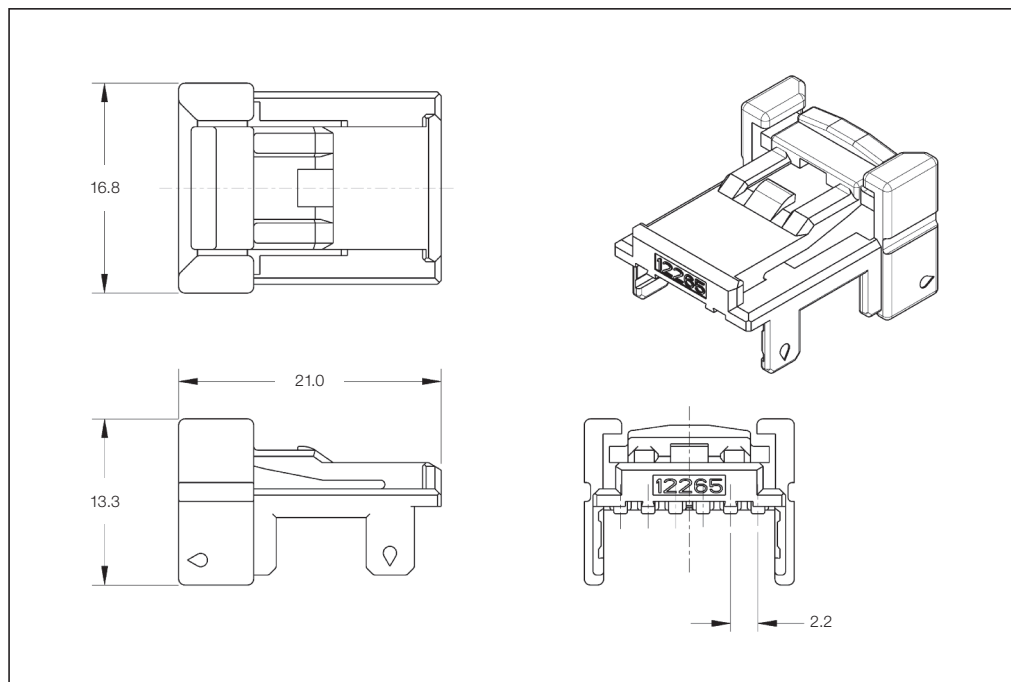
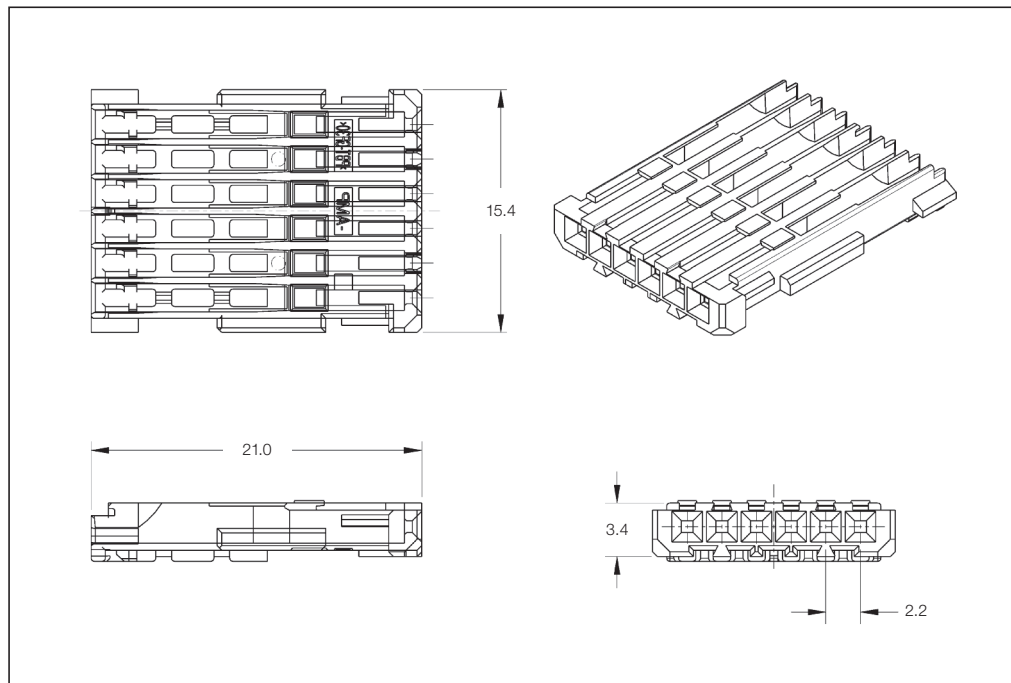
0.08–0.50 mm²

Product Specification:

108-5660, 108-5668

Application Specification:

114-5276



12 Position Receptacle Housings

No. of Positions	Keying Options	Housing Color	Part Numbers						
			Sub-Plug (Needs 2)	Cover	Lock Housing	Cover and Lever	Mating Pin Housing	Mating PCB Header Right-Angle	Mating PCB Header Vertical
12	–	Natural	1473809-1	–	1473810-1	–	1565894-1	1318772-x see customer drawing	1473898-x see customer drawing
			1717759-1*						

*) Receptacle pre-inserted

Receptacle Housings

Technical Features

No. of Positions:

16 Positions

Housing Material:

PBT

Wire Size Range:

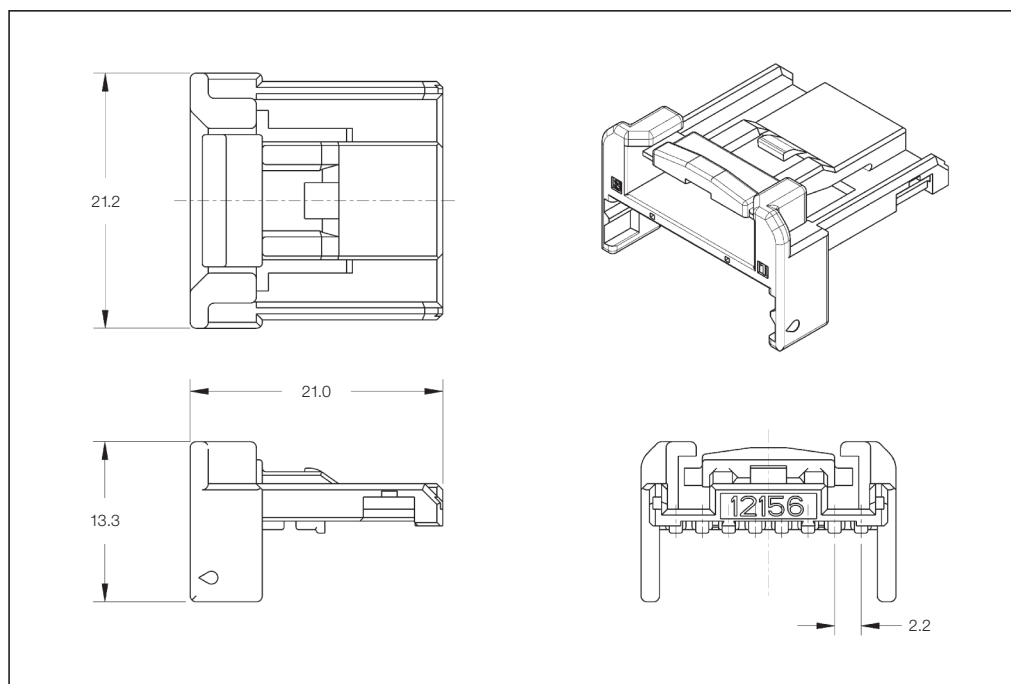
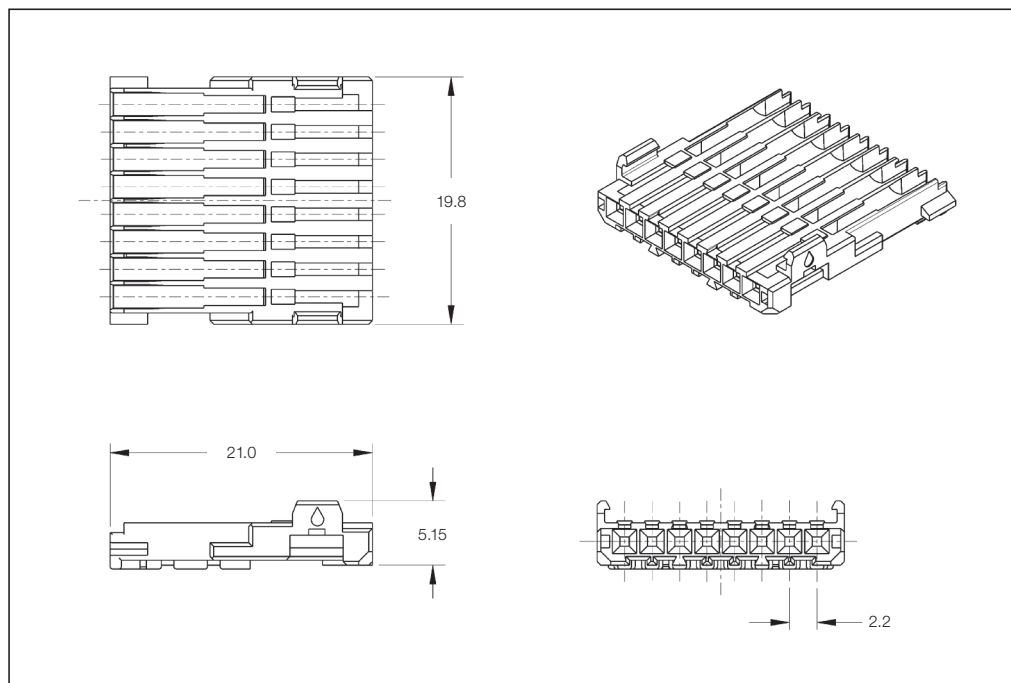
0.08–0.50 mm²

Product Specification:

108-5660, 108-5668

Application Specification:

114-5276



16 Position Receptacle Housings

No. of Positions	Keying Options	Housing Color	Part Numbers						
			Sub-Plug (Needs 2)	Cover	Lock Housing	Cover and Lever	Mating Pin Housing	Mating PCB Header Right-Angle	Mating PCB Header Vertical
16	–	Natural	1318692-1	–	1318694-1	–	1473796-1	1318382-x see customer drawing	1565476-x see customer drawing
			1318690-1*						

*) Receptacle pre-inserted

Receptacle Housings

Technical Features

No. of Positions:

20 Positions

Housing Material:

PBT

Wire Size Range:

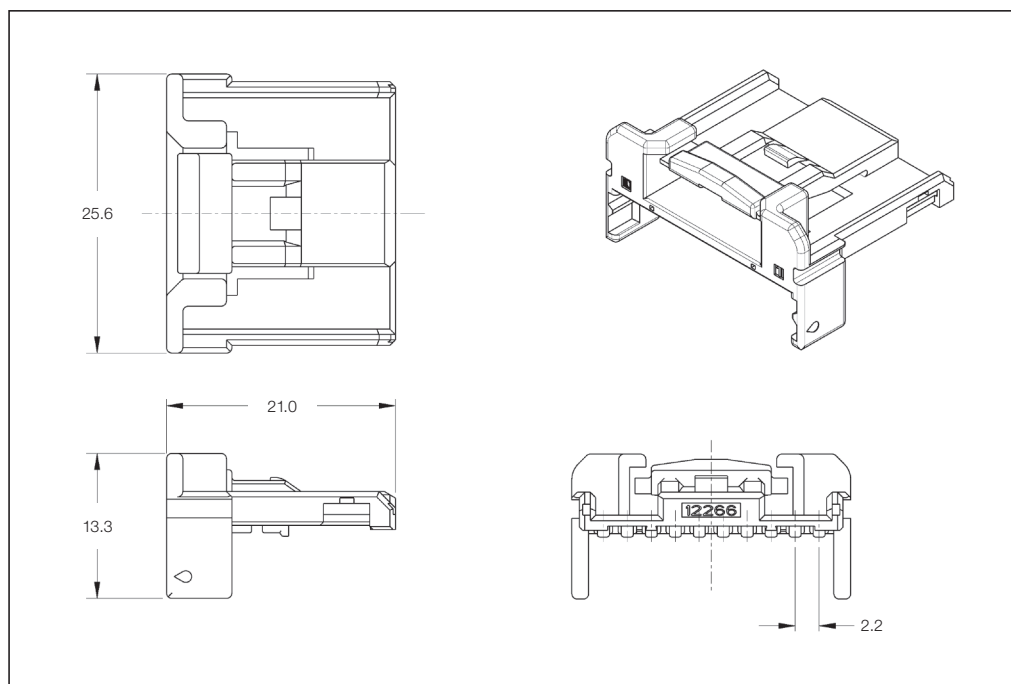
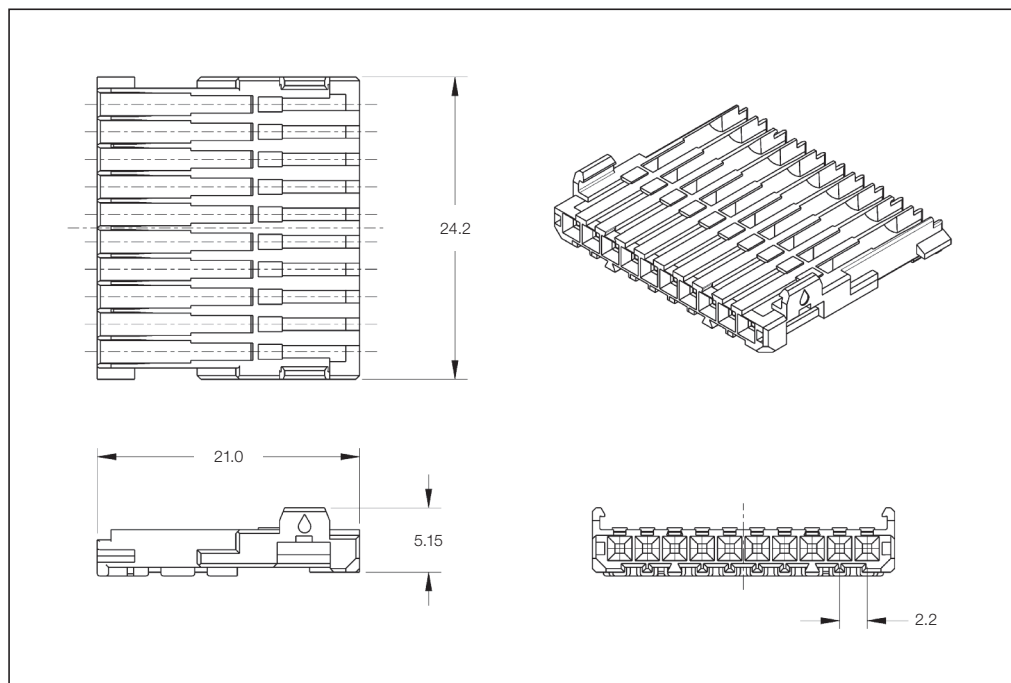
0.08–0.50 mm²

Product Specification:

108-5660, 108-5668

Application Specification:

114-5276



20 Position Receptacle Housings

No. of Positions	Keying Options	Housing Color	Part Numbers						
			Sub-Plug (Needs 2)	Cover	Lock Housing	Cover and Lever	Mating Pin Housing	Mating PCB Header Right-Angle	Mating PCB Header Vertical
20	–	Natural	1473807-1	–	1473808-1	–	1473750-1	N/A	N/A
			1717249-1*						

*) Receptacle pre-inserted

Receptacle Housings

Technical Features

No. of Positions:

24 Positions

Housing Material:

PBT

Wire Size Range:

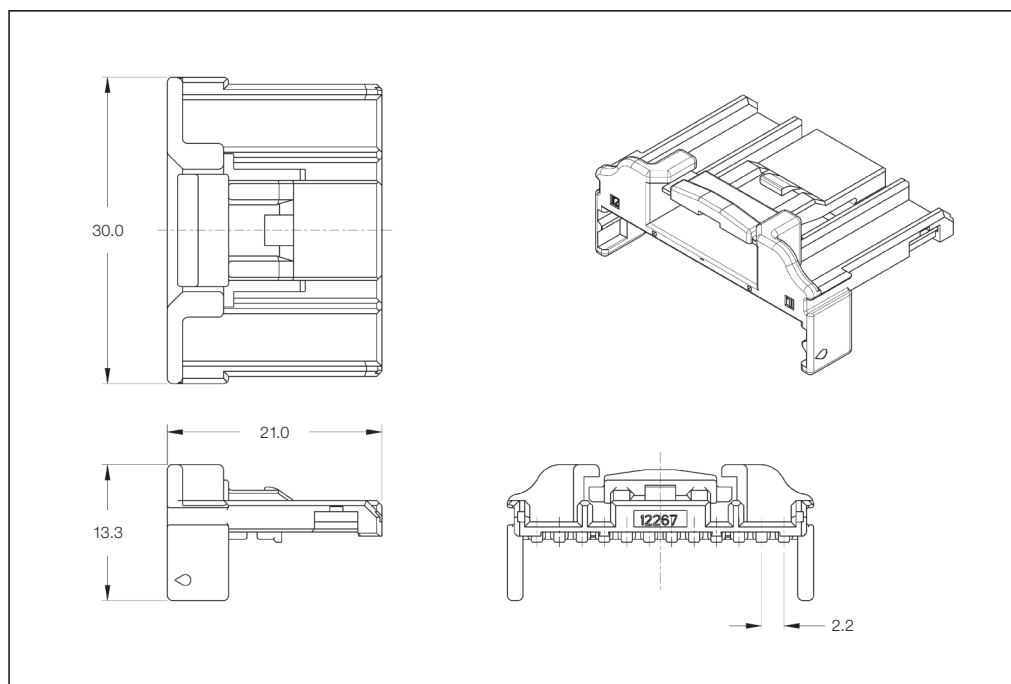
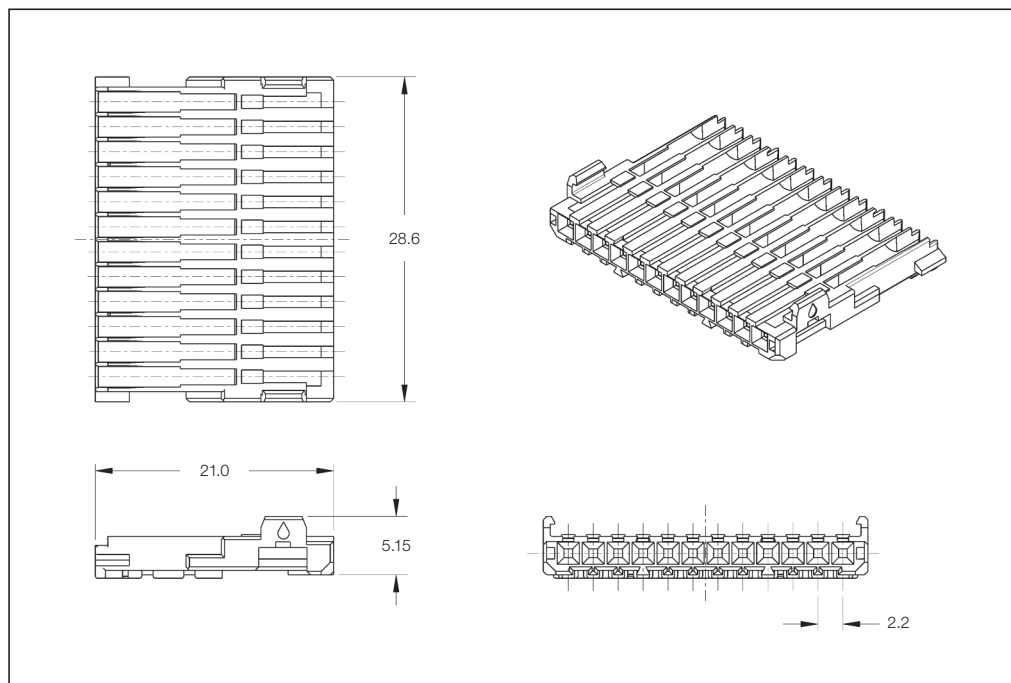
0.08–0.50 mm²

Product Specification:

108-5660, 108-5668

Application Specification:

114-5276



24 Position Receptacle Housings

No. of Positions	Keying Options	Housing Color	Part Numbers						
			Sub-Plug (Needs 2)	Cover	Lock Housing	Cover and Lever	Mating Pin Housing	Mating PCB Header Right-Angle	Mating PCB Header Vertical
24	–	Natural	1473803-1	–	1473804-1	–	–	1318853-x see customer drawing	1376111-x see customer drawing
			1746126-1*						

*) Receptacle pre-inserted

Receptacle Housings

Technical Features

No. of Positions:

32 Positions

Housing Material:

PBT

Wire Size Range:

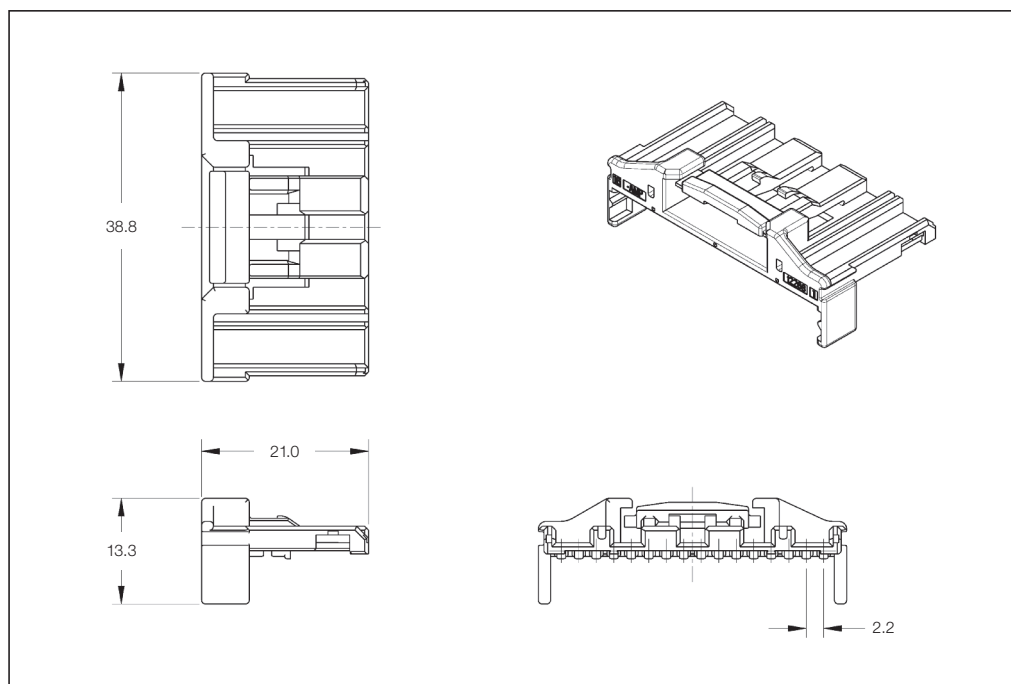
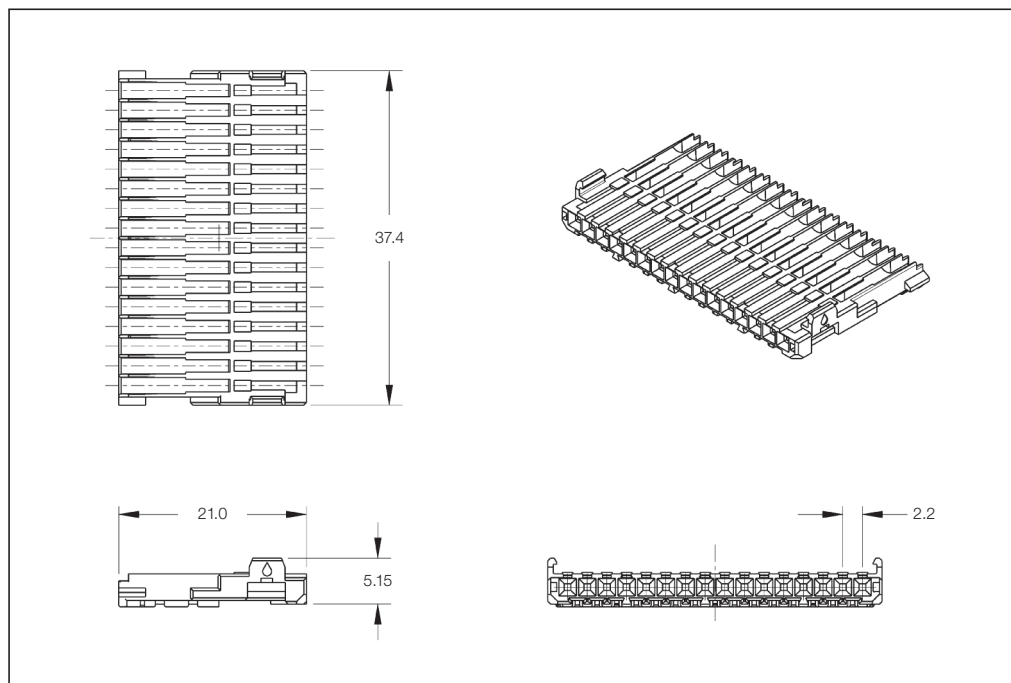
0.08–0.50 mm²

Product Specification:

108-5660, 108-5668

Application Specification:

114-5276



32 Position Receptacle Housings

No. of Positions	Keying Options	Housing Color	Part Numbers						
			Sub-Plug (Needs 2)	Cover	Lock Housing	Cover and Lever	Mating Pin Housing	Mating PCB Header Right-Angle	Mating PCB Header Vertical
32	–	Natural	1473805-1	–	1473806-1	–	1473799-1	1318745-x see customer drawing	N/A
			1717250-1*						

*) Receptacle pre-inserted

Unsealed Pin Housings 2-Rows

Technical Features

No. of Positions:

4 Positions

Housing Material:

PBT

Wire Size Range:

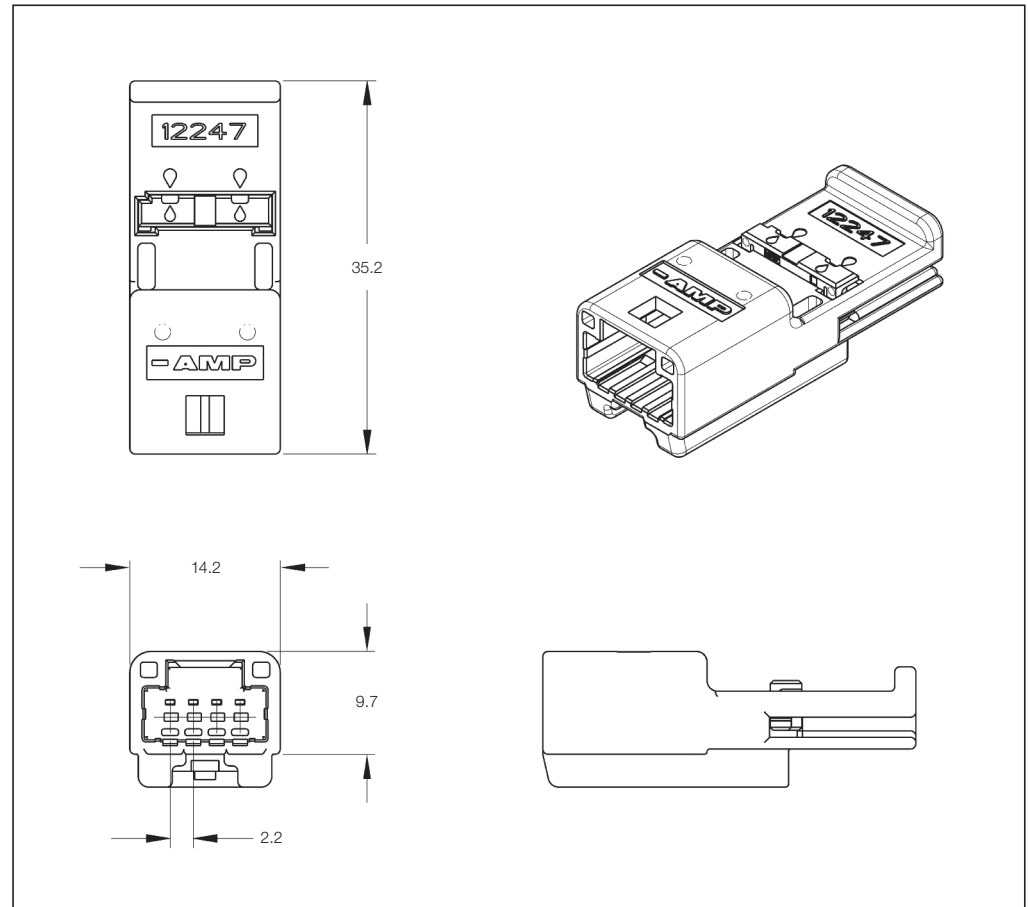
0.08–0.50 mm²

Product Specification:

108-5660

Application Specification:

114-5276



4 Position Unsealed Pin Housings

No. of Positions	Keying Options	Housing Color	Part Numbers					
			Pin Housing	Cover	Locking Device	Cover and Lever	Sub-Plug (Needs 2)	Lock Housing
4	–	Natural	1473790-1	–	–	–	1473800-1 1717248-1*	1473801-1

*) Receptacle pre-inserted on Part No. **1717248-1**.

Unsealed Pin Housings 2-Rows

Technical Features

No. of Positions:

8 Positions

Housing Material:

PBT

Wire Size Range:

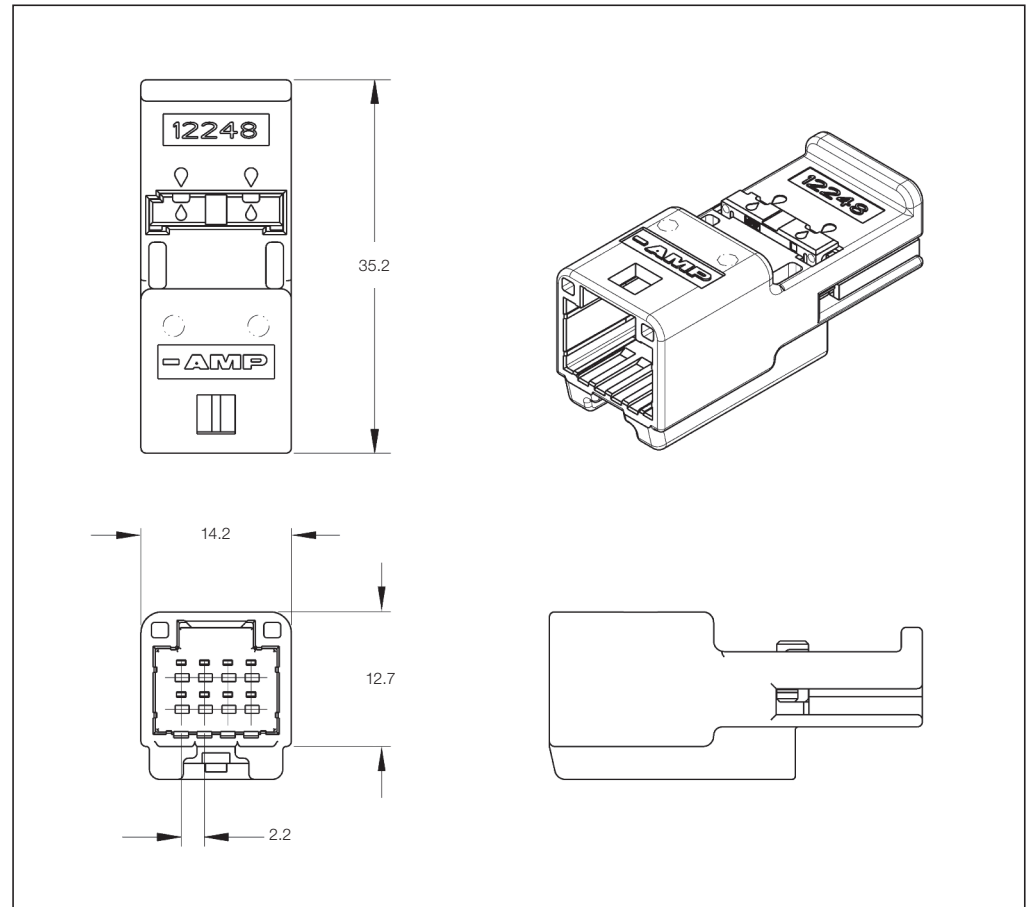
0.08–0.50 mm²

Product Specification:

108-5660, 108-5668

Application Specification:

114-5276



8 Position Unsealed Pin Housings

No. of Positions	Keying Options	Housing Color	Part Numbers					
			Pin Housing	Cover	Locking Device	Cover and Lever	Sub-Plug (Needs 2)	Lock Housing
8	–	Natural	1473793-1	–	–	–	1473800-1 1717248-1*	1473802-1

*) Receptacle pre-inserted on Part No. **1717248-1**.

Unsealed Pin Housings 2-Rows

Technical Features

No. of Positions:

12 Positions

Housing Material:

PBT

Wire Size Range:

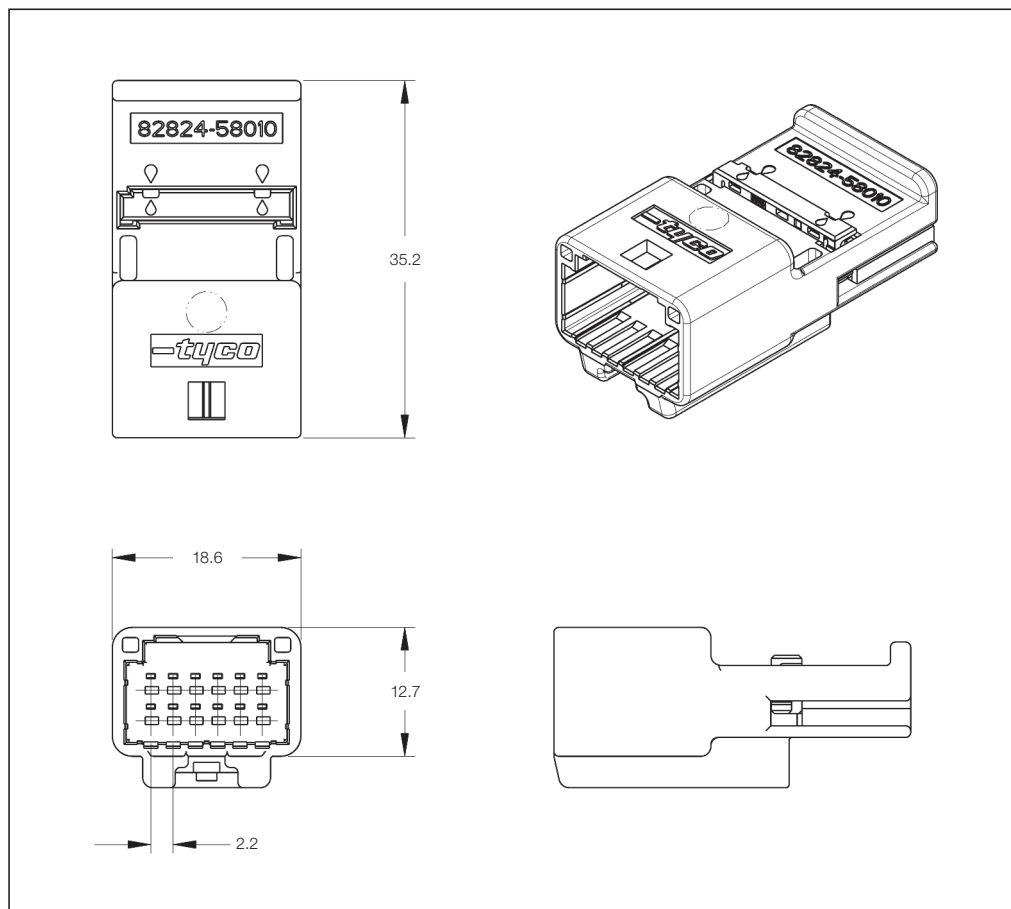
0.08–0.50 mm²

Product Specification:

108-5660

Application Specification:

114-5276



12 Position Unsealed Pin Housings

No. of Positions	Keying Options	Housing Color	Part Numbers					
			Pin Housing	Cover	Locking Device	Cover and Lever	Sub-Plug (Needs 2)	Lock Housing
12	–	Natural	1565894-1	–	–	–	1473809-1 1717591-1*	1473810-1

*) Receptacle pre-inserted on Part No. **1717591-1**.

Unsealed Pin Housings 2-Rows

Technical Features

No. of Positions:

16 Positions

Housing Material:

PBT

Wire Size Range:

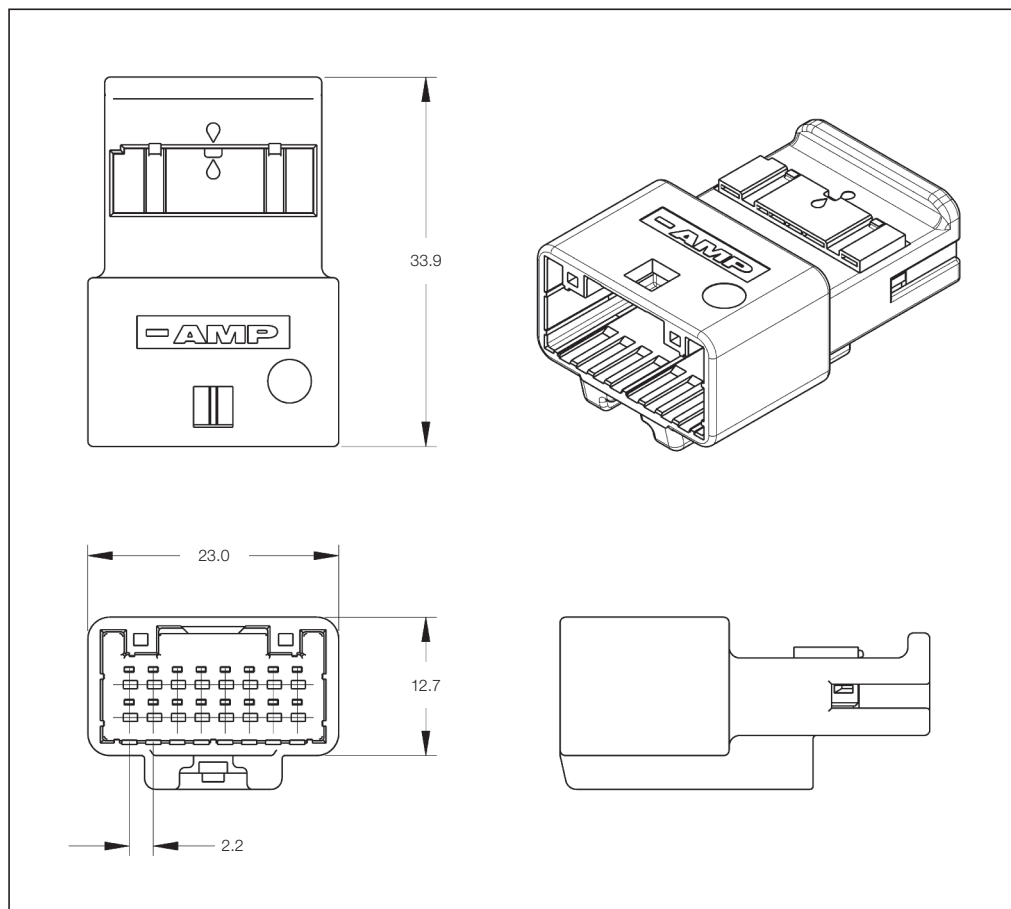
0.08–0.50 mm²

Product Specification:

108-5660, 108-5668

Application Specification:

114-5291



16 Position Unsealed Pin Housings

No. of Positions	Keying Options	Housing Color	Part Numbers					
			Pin Housing	Cover	Locking Device	Cover and Lever	Sub-Plug (Needs 2)	Lock Housing
16	–	Natural	1473796-1	–	–	–	1318692-1 1318690-1*	1318694-1

*) Receptacle pre-inserted on Part No. **1318690-1**.

Unsealed Pin Housings 2-Rows

Technical Features

No. of Positions:

20 Positions

Housing Material:

PBT

Wire Size Range:

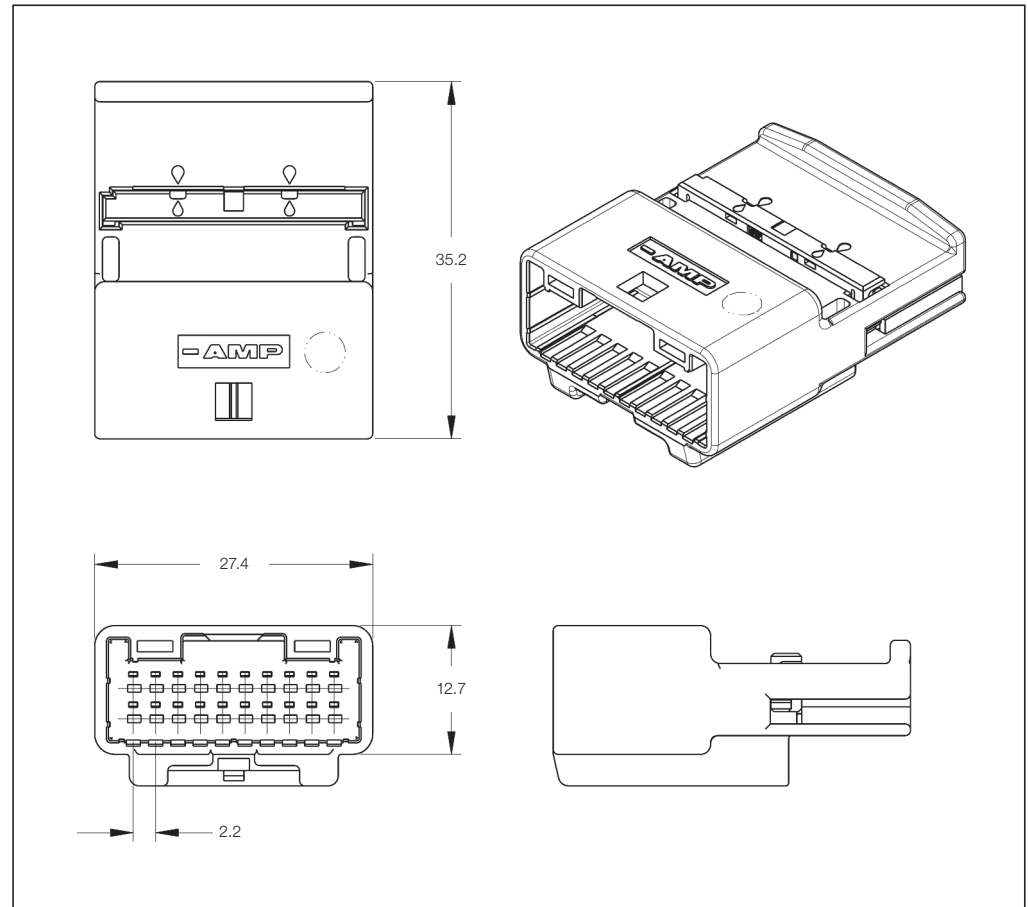
0.08–0.50 mm²

Product Specification:

108-5660, 108-5668

Application Specification:

114-5291



20 Position Unsealed Pin Housings

No. of Positions	Keying Options	Housing Color	Part Numbers					
			Pin Housing	Cover	Locking Device	Cover and Lever	Sub-Plug (Needs 2)	Lock Housing
20	–	Natural	1473750-1	–	–	–	1473807-1 1717249-1*	1473807-1

*) Receptacle pre-inserted on Part No. **1717249-1**.

Unsealed Pin Housings 2-Rows

Technical Features

No. of Positions:

24 Positions

Housing Material:

PBT

Wire Size Range:

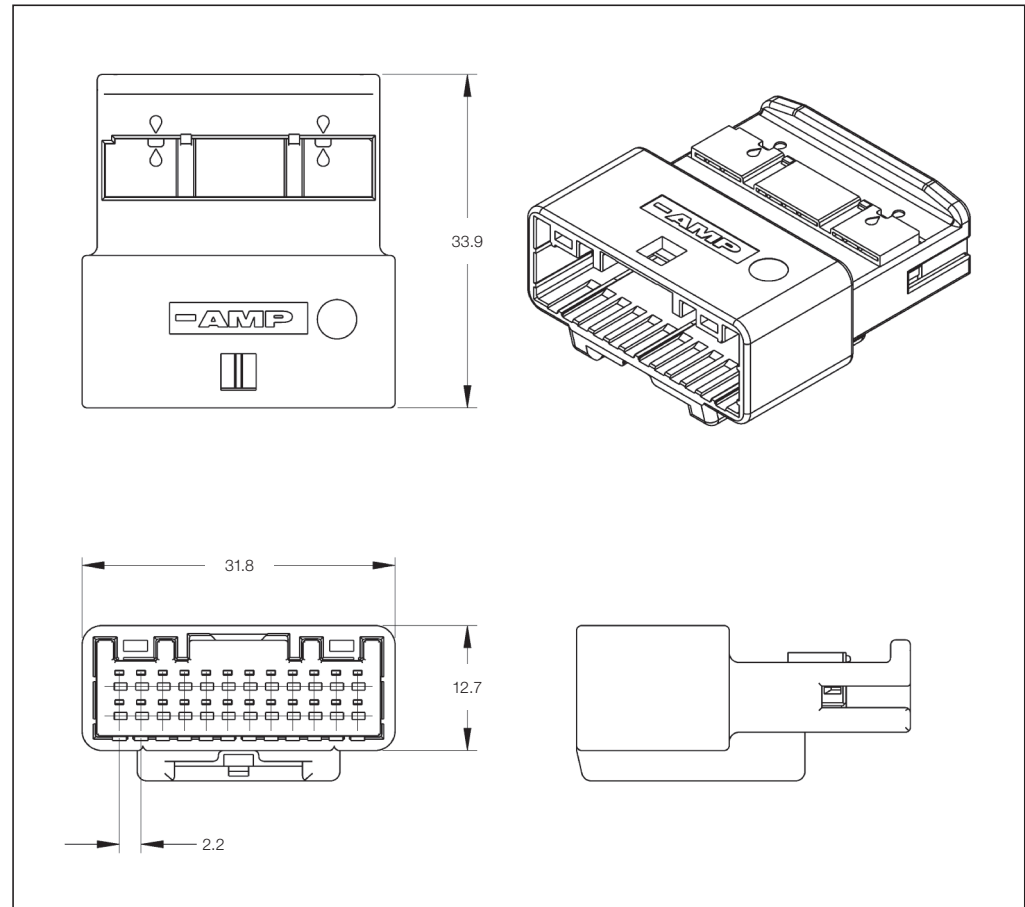
0.08–0.50 mm²

Product Specification:

108-5660, 108-5668

Application Specification:

114-5291



24 Position Unsealed Pin Housings

No. of Positions	Keying Options	Housing Color	Part Numbers					
			Pin Housing	Cover	Locking Device	Cover and Lever	Sub-Plug (Needs 2)	Lock Housing
24	–	Natural	1376103-1	–	–	–	1473803-1	1473804-1
							1746126-1*	

*) Receptacle pre-inserted on Part No. **1746126-1**.

Unsealed Pin Housings 2-Rows

Technical Features

No. of Positions:

32 Positions

Housing Material:

PBT

Wire Size Range:

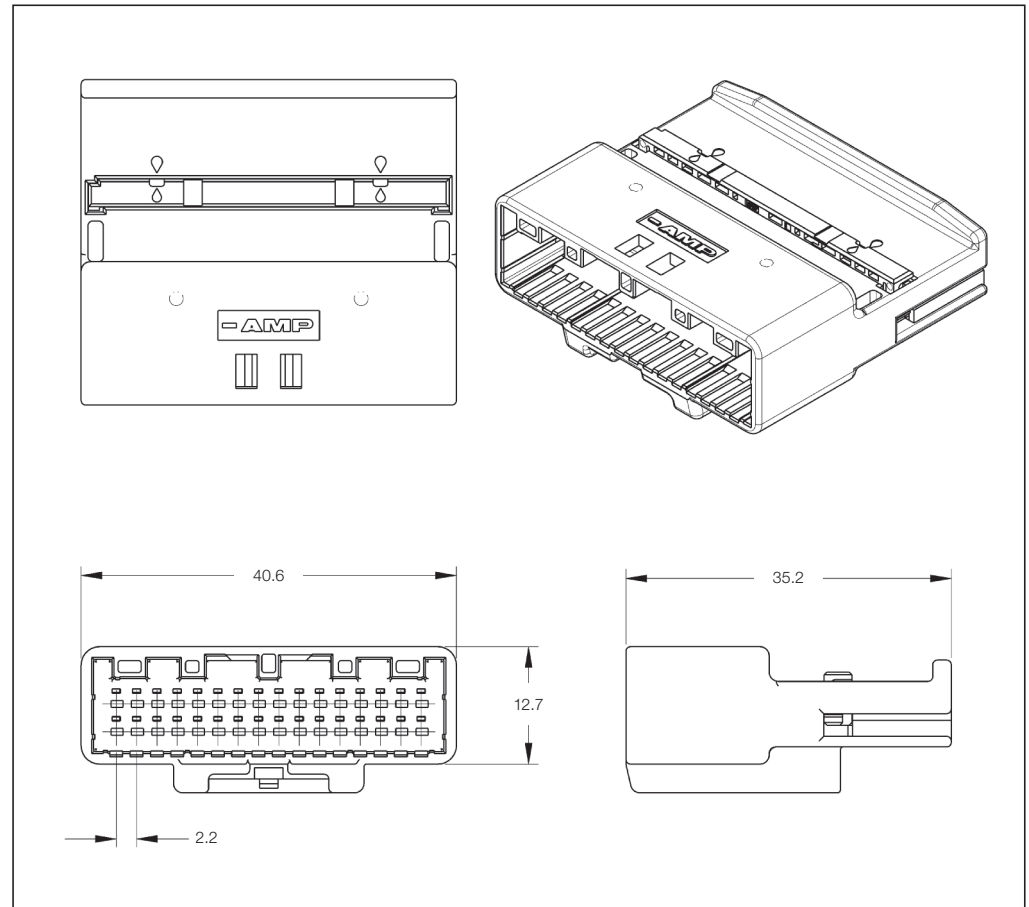
0.08–0.50 mm²

Product Specification:

108-5660, 108-5668

Application Specification:

114-5276



32 Position Unsealed Pin Housings

No. of Positions	Keying Options	Housing Color	Part Numbers					
			Pin Housing	Cover	Locking Device	Cover and Lever	Sub-Plug (Needs 2)	Lock Housing
32	–	Natural	1473799-1	–	–	–	1473805-1 1717250-1*	1473806-1

*) Receptacle pre-inserted on Part No. **1717250-1**.

Engineering Notes

