

POWERTRAIN SYSTEMS



SAFETY & SECURITY SYSTEMS



CONVENIENCE



DRIVER INFORMATION



BODY & CHASSIS SYSTEMS



AMP+ HVA 630 2-Position

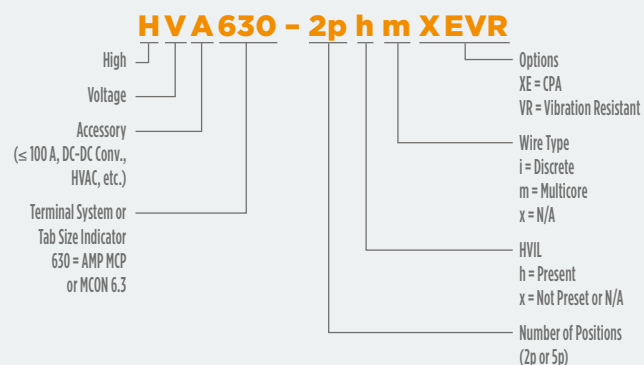
INTRODUCTION

The AMP+ HVA 630 product family is touch-safe and provides CPA (Connector Position Assurance), as well as HVIL (High Voltage Interlock) functionality.

High-voltage applications like onboard chargers (OBC) typically required sealed and shielded two-position DC connectors and headers. Therefore, TE Connectivity has developed the AMP+ HVA 630 product family.

The standard contact system AMP MCP 6.3/4.8 is a well-proven contact system in the industry. The shielded multicore wire is designed for conductor cross-section from 2.5 up to 6.0 mm². This allows currents of 40 A at 140°C ambient temperature and voltages of up to 850 V DC.

Naming Convention HVA 630 Connector Family





Technical Features

Pin Number:

2 (+2 HVIL)

Contact System:

AMP MCP 6.3 / 4.8 contact system

Conductor Cross-sections:

2.5 mm² - 6.0 mm²
from LV216-2

Voltage Range:

850 V DC

Operation Temperature:

-40 °C up to 140 °C

Current Carrying Capacity:

40A @ 140 °C ambient temperature

IP Rating:

Plugged: IP6k7, IP6k9k

Unplugged: IP2XB

HVIL:

Bridged in the connector

CPA:

Yes

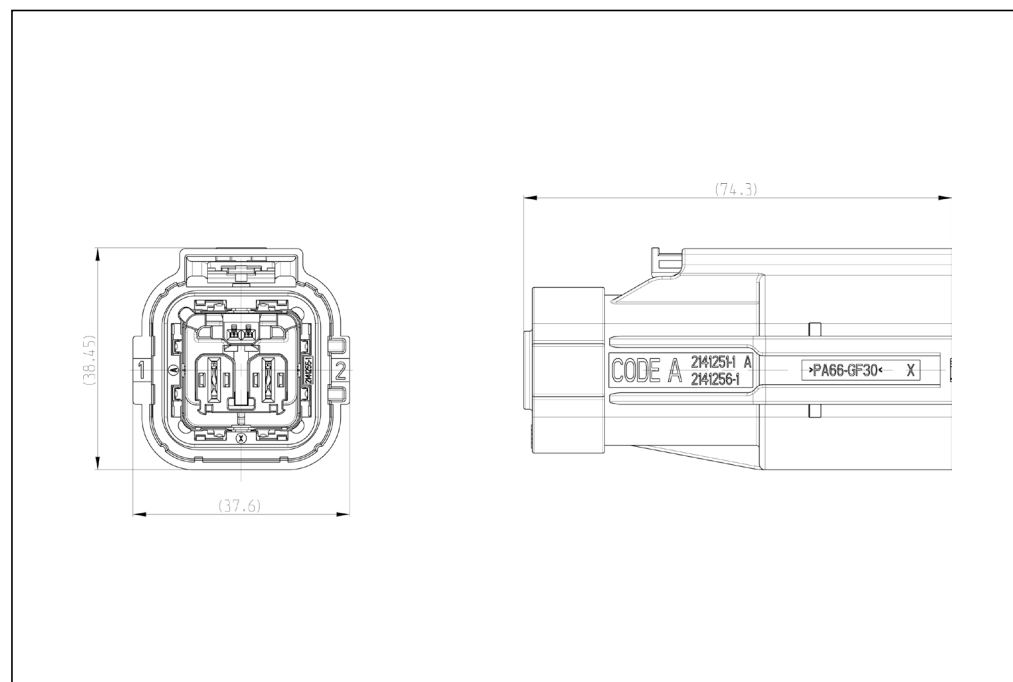
Product Specification:

108-94264

Application Specification:

114-94100

AMP+ HVA 630 2phm - Plug

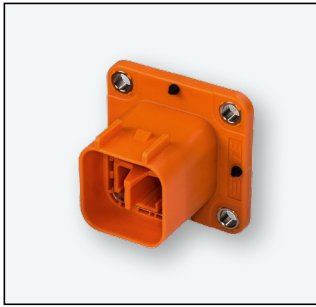


Drawing 114-94100-1 *

AMP+ HVA630 2phm - Plug

Version (Cable Dimension)	Coding	With CPA	Order Information
2.0 x 4.0 mm ²	A	✓	To be Ordered see drawing!
released	F	✓	
2.0 x 6.0 mm ²	A	✓	To be Ordered see drawing!
released			
Intelligent Plug			Order Information
The HVA 630 Intelligent Plug is an high voltage connector, which acts as an blind plug. The Intelligent Plug includes no power contacts. Its function is limited to act as shunt of the HVIL contacts, to shield and seal the system			To be Ordered see drawing!

* Drawing Number is NOT the Order Number!



Technical Features

Pin Number:

2 (+2 HVIL)

Contact System:

AMP MCP 6.3 / 4.8 contact system

Conductor Cross-sections:

2.5 mm² - 6.0 mm²
from LV216-2

Voltage Range:

850 V DC

Operation Temperature:

-40 °C up to 140 °C

Current Carrying Capacity:

40A @ 140 °C ambient temperature

IP Rating:

Plugged: IP6k7, IP6k9k

Unplugged: IP2XB

HVIL:

Bridged in the connector

CPA:

Yes

Interface Drawing:

114-94036

Interface Drawing Adapter Plate:

114-94037

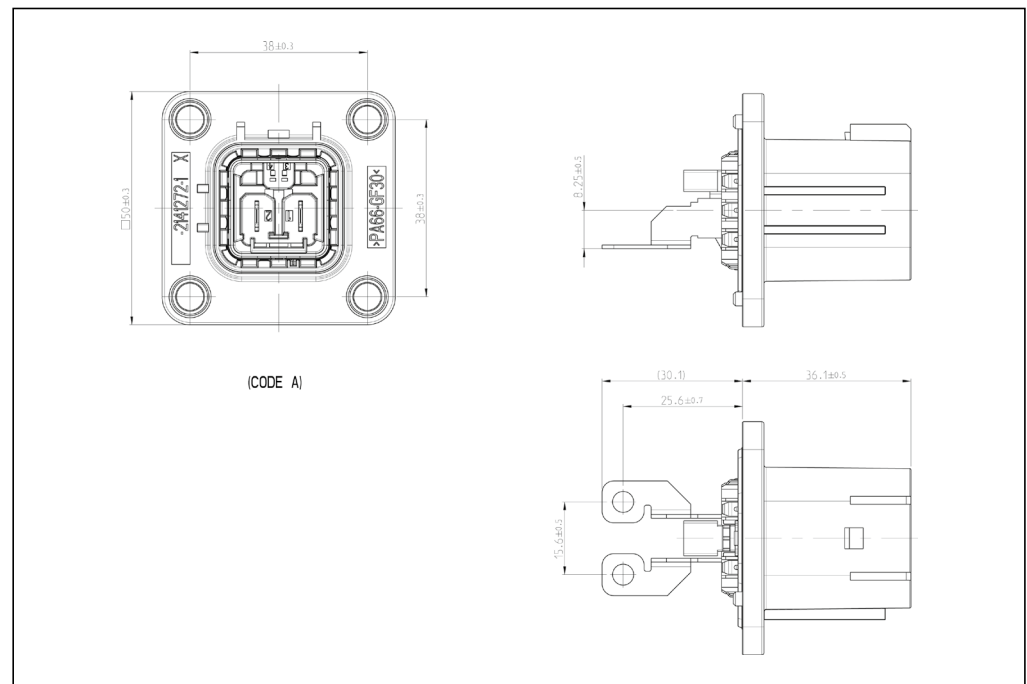
Product Specification:

108-94264

Application Specification:

114-94100

AMP+ HVA 630 2phi - Header



Drawing 2141272 *

AMP+ HVA630 2phi - Header

	Coding	Order Information
HVA 630 - 2p Header	A	To be Ordered
	F	see drawing!

* Drawing Number is NOT the Order Number!