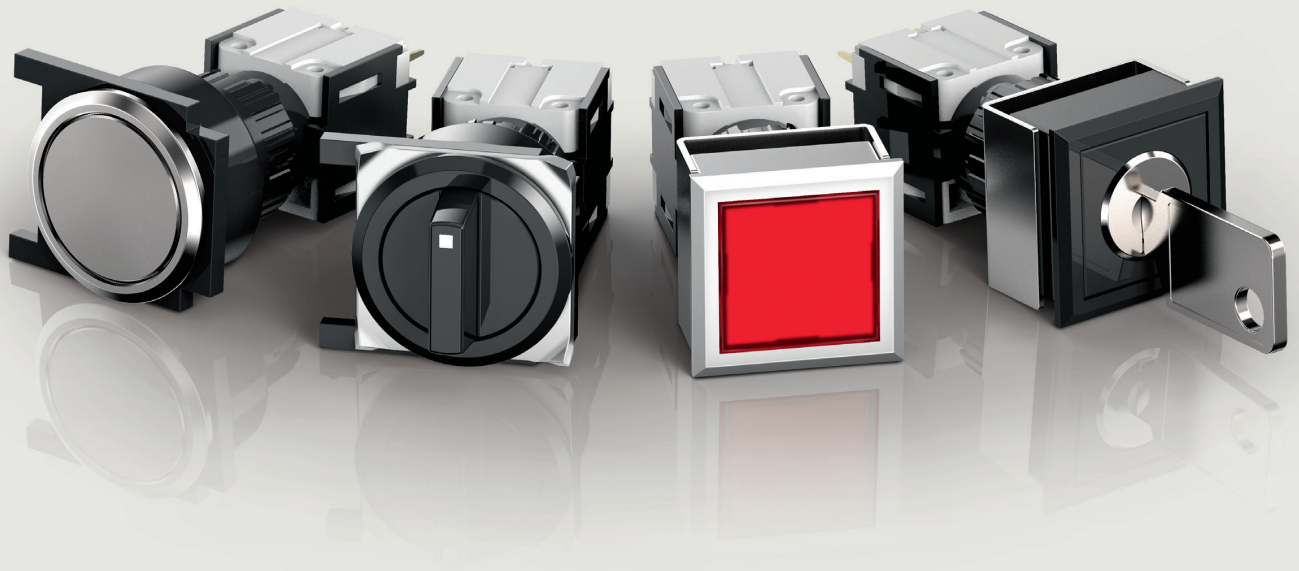


Series

71

Unique PCB mounting system.

www.eao.com



Series 71

Unique PCB mounting system.

Unique printed circuit board (PCB) technology enables the Series 71 to provide versatile and modular opportunities for deployment in applications such as machinery and control cabinet engineering.

EAO Series 71 is an attractive range of flush mount switches with excellent tactile feedback, IP65 sealing and contact blocks that can be fitted to any PCB.

The high-quality pushbuttons, illuminated pushbuttons, keylock switches, selector switches and indicators can be combined in any arrangement and mounted on the same PCB level. The combination of PCB soldered contact blocks and the reliable twist and lock fixing mechanism offers easy assembly without the need for mounting studs.

Thanks to a variety of actuators and switching elements, this series also has a modular structure that enables a diverse range of configuration options. It also enables efficient storage.

The flush-mounted construction gives each application a modern front design and protects the control devices from damage.

The round, square or rectangular lenses have a large area for text/symbols and bright LED illumination to help customers design intuitive operator controls.

Typical applications

- Machinery and control systems
- Control cabinet engineering
- Special vehicles
- Conveyor systems
- Process automation
- And many other applications

Functions of the series

- Indicator
- Pushbuttons
- Illuminated pushbuttons
- Mushroom-head pushbuttons
- Keylock switches
- Selector switches

Switching system

Self-cleaning, double-break snap-action system, with up to two normally open and two normally closed contacts.

Materials

- Lens
Polycarbonate (PC), in accordance with UL 94 V0, or anodised aluminium
- Front bezel
Polyetherimide (PEI), in accordance with UL 94 V0, or anodised aluminium
- Contact material
AgNi, 2 µm gold-plated
- Switching element
Polyethylene terephthalate (PETP), in accordance with UL 94 V0
- Actuator case material
Polyetherimide (PEI), in accordance with UL 94 V0

Mechanical characteristics

- Terminals
PCB terminal, gold-plated brass
- Tightening torque
For fixing nut: max. 50 Ncm
- Actuating torque
Selector/keylock switch 4 Ncm to 8 Ncm
- Actuating force: Pushbutton 2 N to 3 N
- Actuating distance: Pushbutton 3 mm
- Selector/keylock switch 2-position, 3-position
Momentary contact approx. 42° approx. 2 x 42°
Latching contact approx. 90° approx. 2 x 90°
- Bounce time ≤ 1 ms

Advantages.

- Unique PCB mounting
- A variety of switching functions
- Modular design and flush mounting
- IP65 front protection
- Low-level switching capability

- Mechanical life
 - Pushbutton latching contact
1 million cycles of operation
 - Pushbutton momentary contact
2 million cycles of operation
 - Keylock switch
50 000 cycles of operation
 - Selector switch
100 000 cycles of operation
- Resistance to soldering heat
 - Manual soldering 350 °C, 3 seconds
 - Mechanical soldering 260 °C, 5 seconds

Electrical properties

- Contact resistance when new $\leq 50 \text{ m}\Omega$
- Insulation resistance $\geq 10^{12} \Omega$
- Breaking capacities
 - Alternating current (AC): $\cos\phi$ 0.7 to 0.8
250 VAC/3 A
 - Direct current:
24 VDC/3 A
250 VDC/0.5 A
- Recommended minimum operating data
 - 5 VAC/10 mA
- Dielectric strength
 - 2000 VAC, 50 Hz, 1 min. between all terminals and earth

Ambient conditions

- Temperatur
 - Storage temperature -40°C to $+85^\circ\text{C}$
 - Operating temperature -25°C to $+55^\circ\text{C}$
- Resistance to shock (semi-sinusoidal)
 - max. 500 m/s^2 , pulse width 11 ms, 3-axis
in accordance with EN IEC 60068-2-27
- Resistance to vibration (sinusoidal)
 - max. 100 m/s^2 from 10 Hz to 500 Hz,
in accordance with EN IEC 60068-2-6
- Environmental resistance
 - Humid heat, constant
56 days, $+40^\circ\text{C}/93\%$ relative humidity,
in accordance with EN IEC 60068-2-78

Front protection

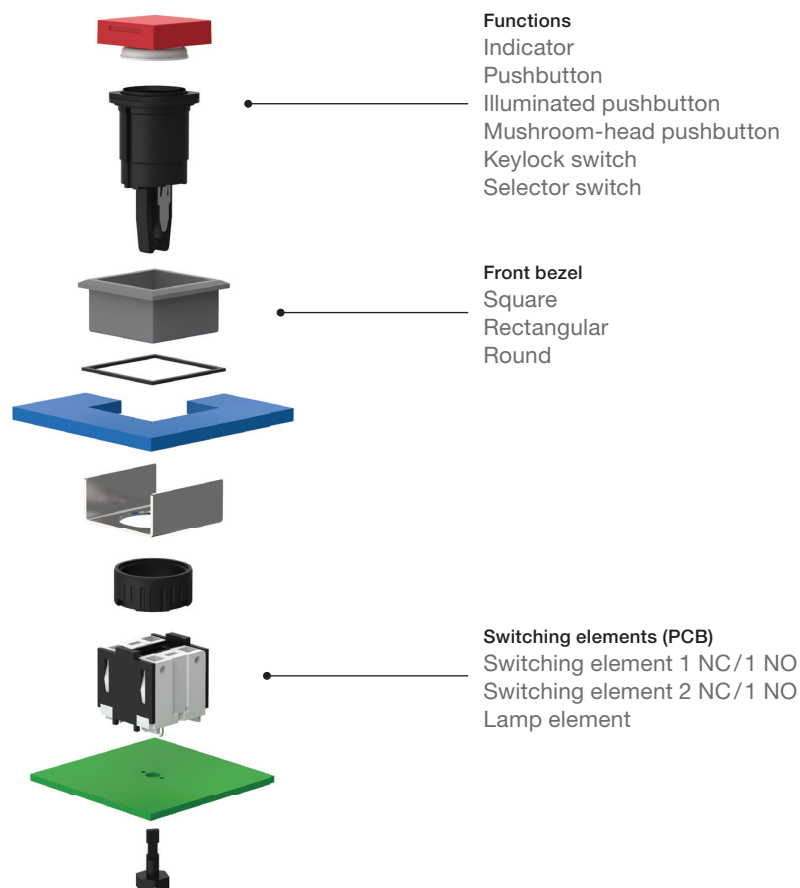
- IP65

Standards and directives

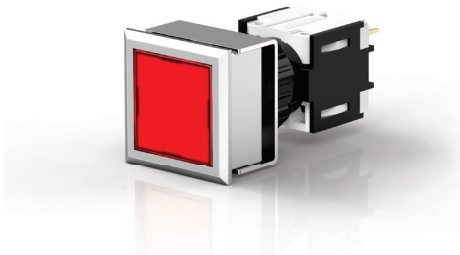
- Declaration of Conformity
 - CE

	Series				
	14	61	71	82	84
Functions					
Pushbutton	■	■	■	■	■
Illuminated pushbutton	■	■	■	■	■
Indicator	■	■	■	■	■
Selector switch	■	■	■		
Illuminated selector switch		■	■		
Keylock switch	■	■	■		
Emergency stop switch		■			■
Stop switch		■			
Buzzer	■	■			
Mushroom-head pushbutton	■	■	■		■
Potentiometer		■			

Product structure of Series 71.



Highlights.



Illuminated pushbutton

Series 71

EAO pioneered illuminated pushbuttons. These modular switches and indicators are used even in harsh conditions around the world. They are used anywhere where reliable visual and tactile feedback is crucial.

The PCB connectors of the Series 71 consume little space and are therefore suitable for many applications. The locking pins on each switching element allow mounting to the front panels without PCB mounting studs.

- Flush mount lenses
- Plastic or metal lenses
- With or without symbol
- IP65 front protection



Keylock switch

Series 71

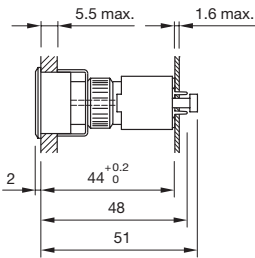
Keylock switches are used worldwide to prevent accidental and unauthorised operation. Additionally, they allow access authorisation for user groups to be implemented.

- Modular design
- Square, rectangular or round shape
- 2-positions or 3-positions
- Keylock switches with two keys each
- Standard DOM311 lock

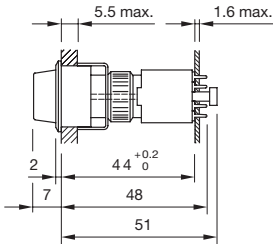
Dimensions and mounting cut-outs.

Dimensions

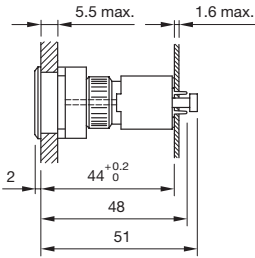
Indicator, illuminated pushbutton
(square/rectangular)



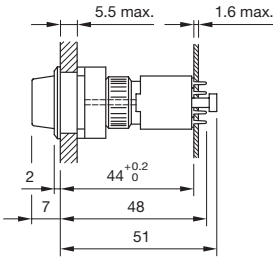
Selector switch (square)



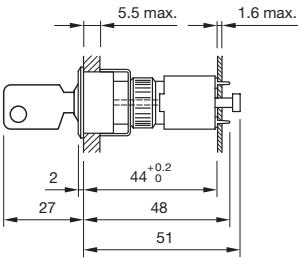
Indicator, illuminated pushbutton (round)



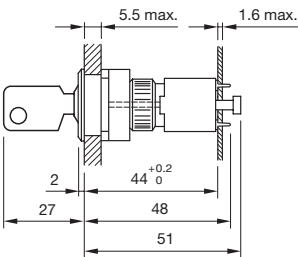
Selector switch (round)



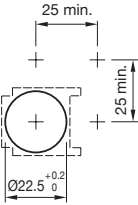
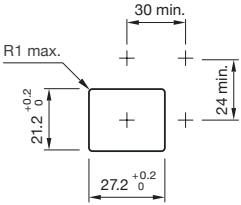
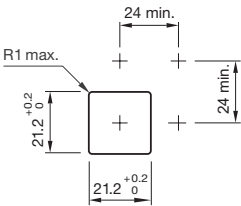
Keylock switch (square/rectangular)



Keylock switch (round)



Mounting cut-outs



Services.

Value Added Services

The EAO range of standard components is rounded off with our value added services, which offer the means to make the following customer-specific adjustments to the components:

- Labelling
- Illumination
- Mechanical adjustments
- Electronic adjustments
- Software
- Cable and plug mounting
- Complete product and/or kitting service

Online product configurator

Build your tailored product in the online product configuration system at www.eao.com and obtain technical specifications and 3D data at the same time.

EAO downloads

Find more extensive documents such as catalogues, data sheets, certificates and brochures to read and use for research under downloads at www.eao.com.



EAO Contact.

Your centre of excellence.

Headquarters

EAO Holding AG
Tannwaldstrasse 88
CH-4600 Olten
Telephone +41 62 286 91 11
info@eao.com

Manufacturing Companies

Switzerland
EAO AG
Tannwaldstrasse 88
CH-4600 Olten
Telephone +41 62 286 91 11
info@eao.com

EAO Systems AG
Tannwaldstrasse 88
CH-4600 Olten
Telephone +41 62 286 91 11
sales.esy@eao.com

China
EAO (Guangzhou) Ltd.
3/F, Block G4, South China
New Materials Innovation Park
31 Kefeng Road,
Guangzhou Science City,
CN-Guangzhou, PRC
Telephone +86 20 3229 0390
sales.ecn@eao.com

Germany
EAO Automotive GmbH & Co. KG
Richard-Wagner-Straße 3
DE-08209 Auerbach/Vogtland
Telephone +49 3744 8264 0
sales.esa@eao.com

North America
EAO Corporation
One Parrott Drive
Shelton
US-CT 06484
Telephone +1 203 951 4600
sales.eus@eao.com

Sales Companies

China
EAO (Guangzhou) Ltd.
3/F, Block G4, South China
New Materials Innovation Park
31 Kefeng Road,
Guangzhou Science City,
CN-Guangzhou, PRC
Telephone +86 20 3229 0390
sales.ecn@eao.com

EAO (Shanghai) Office
Rm. 403, Block 5#,
CIFI Century Square, Lane 28,
NO. 21, Danba Road,
Putuo District
CN-Shanghai PRC
Telephone +86 21 6095 0717
sales.ecn@eao.com

France
EAO France SAS
5, rue Henri François
FR-77330 Ozoir-la-Ferrière
Telephone +33 1 64 43 37 37
sales.efr@eao.com

**Germany, Austria,
Poland, Czech Republic**
EAO GmbH
Langenberger Straße 570
DE-45277 Essen
Telephone +49 201 8587 0
sales.ede@eao.com

Hong Kong (Asia Pacific)
EAO (Far East) Ltd.
Unit A1, 1/F, Block A
Tin On Industrial Building
777 Cheung Sha Wan Road
Lai Chi Kok, Kln
HK-Hong Kong
Telephone +852 27 86 91 41
sales.ehk@eao.com

Italy
EAO Italia S.r.l.
Centro Direzionale Summit –
Palazzo D1
Via Brescia, 28
IT-20063 Cernusco sul Naviglio (MI)
Telephone +39 02 92 471934
sales.eit@eao.com

Japan
EAO Japan Co. Ltd.
Net 1 Mita Bldg. 3F
3-1-4 Mita Minato-ku
JP-Tokyo 108-0073
Telephone +81 3 5444 5411
sales.esj@eao.com

Netherlands, Belgium
EAO Benelux B.V.
Kamerlingh Onnesweg 46
Postbus 544
NL-3300 AM Dordrecht
Telephone +31 78 653 17 00
sales.enl@eao.com

North America
EAO Corporation
One Parrott Drive
Shelton
US-CT 06484
Telephone +1 203 951 4600
sales.eus@eao.com

Sweden
EAO Svenska AB
Box 7032
SE-121 07 Stockholm-Globen
Telephone +46 8 683 86 60
sales.esw@eao.se

Switzerland
EAO Schweiz AG
Tannwaldstrasse 86
CH-4600 Olten
Telephone +41 62 286 95 00
sales.ech@eao.com

United Kingdom
EAO Ltd.
Highland House
Albert Drive
Burgess Hill
GB-West Sussex RH15 9TN
Telephone +44 1444 236 000
sales.euk@eao.com