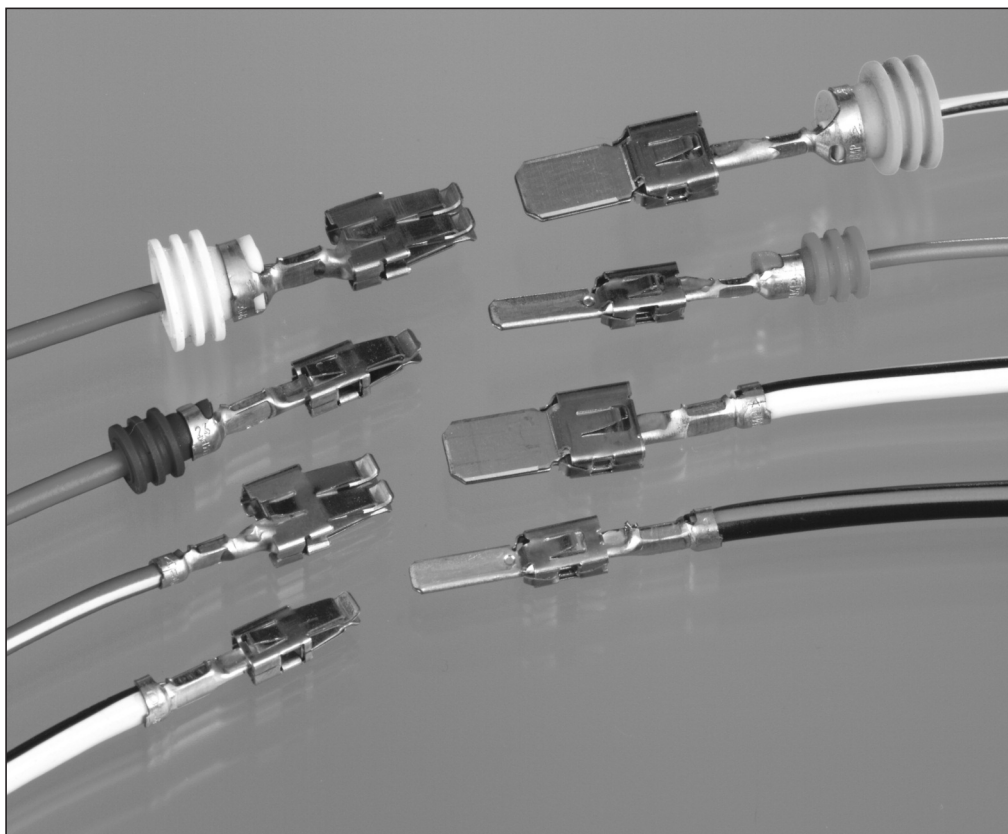
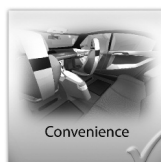


Introduction



The comprehensive range of TE Connectivity Flat Contact Systems is extensively used in the automotive industries.

The tabs mate with a rich variety of receptacle contacts e.g. Timer. Tabs can be applied in both watertight and non-watertight connectors.

They can be rapidly and economically attached to the lead using TE Connectivity hand, semi-automatic or fully-automatic tooling.

If required they can be inserted into the housings in a fully-automatic operation.

Tab Contacts Symmetric

**Tabs 2.8 x 0.8 mm
with Steel Top Spring**

Extraction Tool:

Part No. **1-1579007-6**

Product Group Drawing:

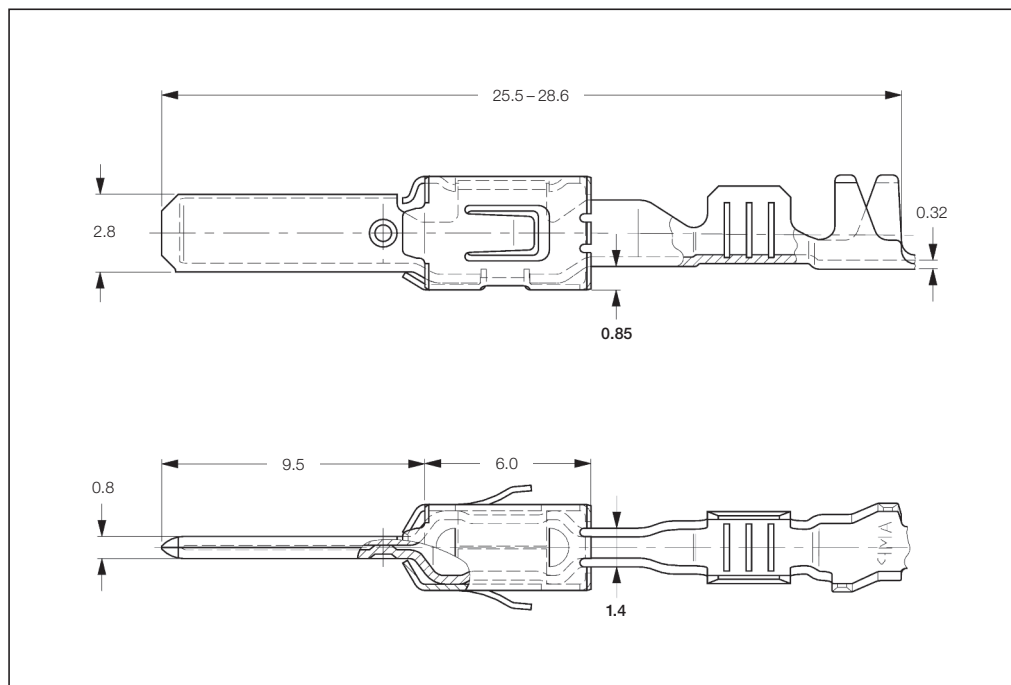
1355052

Product Specification:

108-18063

Application Specification:

114-18051



Standard Tab Contacts

Wire Size Range (mm ²)	Insulation Diameter (mm)		Material and Finish *	Part Numbers					Hand Tool Complete
	FLK	FLR		Strip Form	Package Quantity	Loose- Piece	Package Quantity	Applicator *	
0.2-0.5	–	1.15-1.60	1-xxx-1 / 1-xxx-2 / 1-xxx-3 / 2-xxx-1 / 2-xxx-2 / 2-xxx-3	963860	4,000	963861	500	x-1528859-x	734538-1
0.5-1.0	–	1.4-2.0	1-xxx-1 / 1-xxx-2 / 1-xxx-3 / 2-xxx-1 / 2-xxx-2 / 2-xxx-3	962841	4,000	963745	500	x-1528315-x	2063490-1
1.5-2.5	–	2.1-2.9	1-xxx-1 / 1-xxx-2 / 1-xxx-3 / 2-xxx-1 / 2-xxx-2 / 2-xxx-3	962842	3,500	963746	500	x-1528305-x	2063490-1
1.5-2.5	2.4-3.7	–	1-xxx-1 / 1-xxx-2 / 1-xxx-3 / 2-xxx-1 / 2-xxx-2 / 2-xxx-3	962843	3,000	963747	500	–	734417-3
4.0	–	3.4-3.7	1-xxx-1 / 1-xxx-2 / 2-xxx-1 / 2-xxx-2 / 3-xxx-1	968946	2,700	968965	500	x-1528430-x	–

Tab Contacts with Single Wire Sealing System

Wire Size Range (mm ²)	Insulation Diameter (mm)		Material and Finish *	Part Numbers					Hand Tool Complete
	FLK	FLR		Strip Form	Package Quantity	Loose- Piece	Package Quantity	Applicator *	
0.2-0.5	–	max. 2.1	1-xxx-1 / 1-xxx-3	965982	3,500	965983	500	x-1528406-x	–
0.5-1.0	–	max. 2.1	1-xxx-1 / 1-xxx-2 / 1-xxx-3 / 2-xxx-1 / 2-xxx-2 / 2-xxx-3	962915	3,500	963748	500	x-1528452-x	2063490-1
1.5-2.5	–	max. 3.0	1-xxx-1 / 1-xxx-2 / 1-xxx-3 / 2-xxx-1 / 2-xxx-2 / 2-xxx-3	962916	3,500	963749	500	x-1528316-x	2063490-1
4.0	–	max. 3.7	1-xxx-1 / 1-xxx-2 / 2-xxx-1 / 2-xxx-2 / 3-xxx-1	968947	3,500	968966	500	x-1528067-x	–
AWG 12	GXL = max. 3.55		1-xxx-1 / 1-xxx-2	1719504	3,500	1719503	500	x-1852291-x	–

***) Material and Finish:**

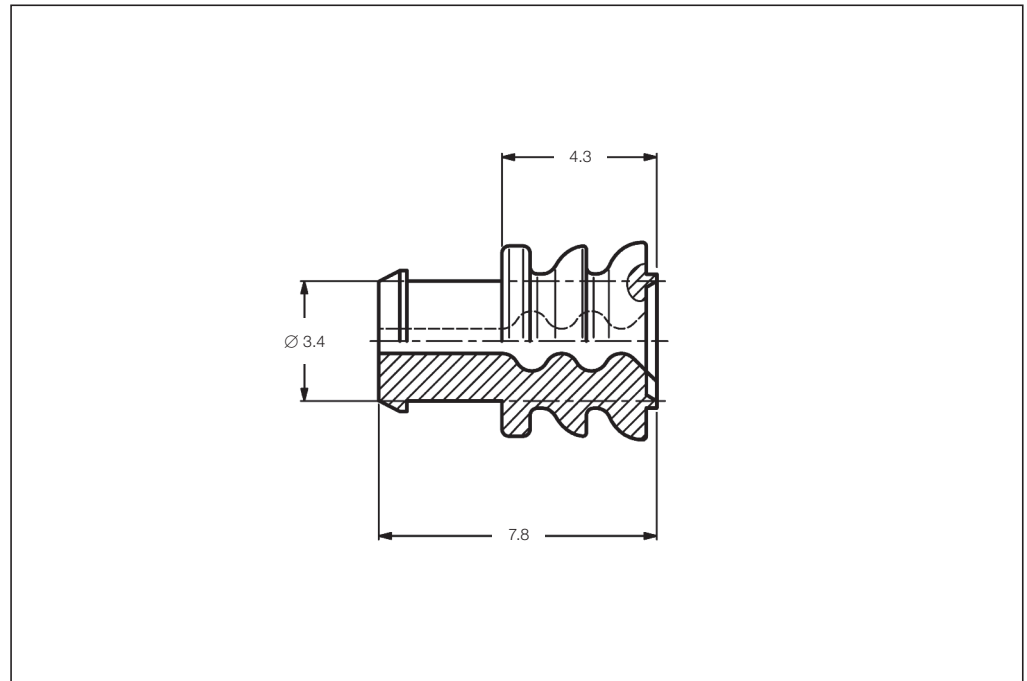
1-xxx-1 = CuSn, pre-tin plated
1-xxx-2 = CuSn, selective silver plated
1-xxx-3 = CuSn, selective gold plated

2-xxx-1 = CuFe, pre-tin plated
2-xxx-2 = CuFe, selective silver plated
2-xxx-3 = CuFe, selective gold plated
3-xxx-1 = CuSn, pre-tin plated

*) The pre- and suffix for the applicators depends on the applied termination equipment.

Single Wire Seals and Sealing Plugs

**Single Wire Seals
and Sealing Plugs**



Insulation Diameter (mm)	Color	Part Number	Package Quantity
1.2–2.1	Blue	828904-1	1,000
		828904-2	10,000
2.2–3.0	White	828905-1	10,000
		828922-1	10,000
Sealing Plug	Natural	828922-1	10,000
	Green	828922-2	10,000

Tab Contacts Symmetric

**Tabs 5.8 x 0.8 mm
with Steel Top Spring**

Extraction Tool:

Part No. **1-1579007-6**

Product Group Drawing:

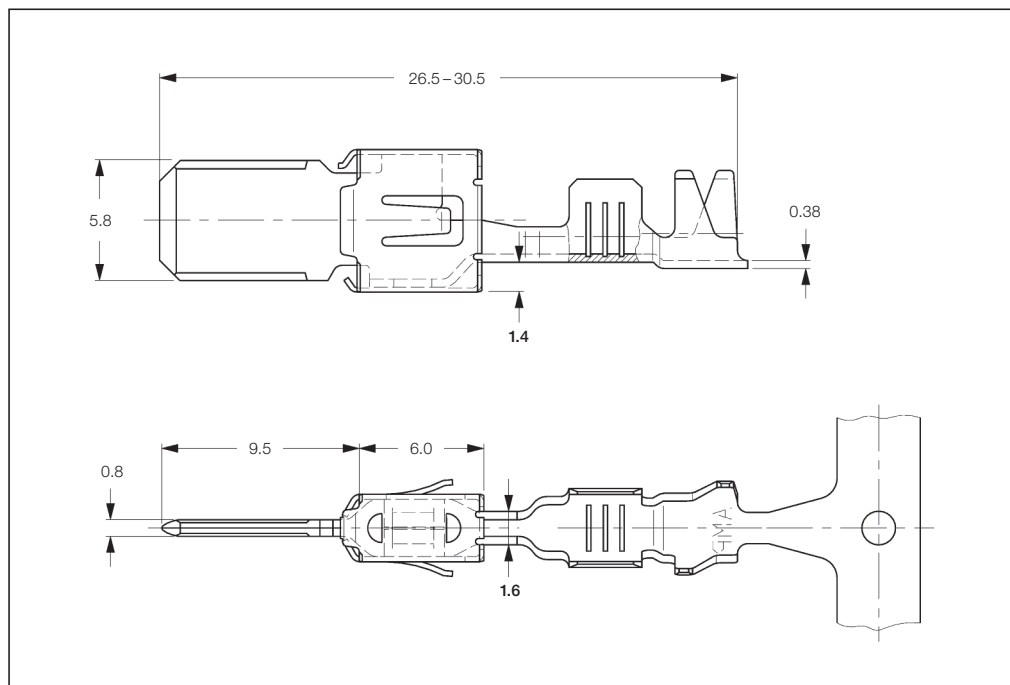
1241895

Product Specification:

108-18064

Application Specification:

114-18052



Standard Tab Contacts

Wire Size Range (mm ²)	Insulation Diameter (mm)		Material and Finish *	Part Numbers				Applicator	Hand Tool 539635-1 with Die Set
	FLK	FLR		Strip Form	Package Quantity	Loose- Piece	Package Quantity		
0.2-0.5	–	1.15-1.60	1-xxx-1 / 2-xxx-1	965984	2,000	965985	500	–	–
0.5-1.0	–	1.4-2.1	1-xxx-1 / 1-xxx-2 / 2-xxx-1 / 2-xxx-2	963734	1,700	963737	500	–	539759-2
1.5-2.5	–	2.2-3.0	1-xxx-1 / 1-xxx-2 / 2-xxx-1 / 2-xxx-2	963735	1,800	963738	500	–	734688-1** 539623-1***
> 2.5-4.0	–	2.7-3.7	1-xxx-1 / 1-xxx-2 / 2-xxx-1 / 2-xxx-2	963736	1,800	963739	500	–	539623-1**
1.5-2.5	2.4-3.7	–	1-xxx-1 / 1-xxx-2 / 2-xxx-1 / 2-xxx-2	962845	1,700	963740	500	–	539759-2
3.0-4.0	3.3-4.5	–	1-xxx-1 / 1-xxx-2 / 2-xxx-1 / 2-xxx-2	962846	1,800	963741	500	–	
4.0-6.0	4.0-5.2	–	1-xxx-1 / 2-xxx-1	968050	1,500	968051	500	–	–

Tab Contacts with Single Wire Sealing System

Wire Size Range (mm ²)	Insulation Diameter (mm)		Material and Finish *	Part Numbers				Applicator	Hand Tool 539635-1 with Die Set
	FLK	FLR		Strip Form	Package Quantity	Loose- Piece	Package Quantity		
0.5-1.0	–	1.4-2.1	1-xxx-1 / 1-xxx-2 / 2-xxx-1 / 2-xxx-2	962917	1,500	963742	500	–	
1.5-2.5	–	2.2-3.0	1-xxx-1 / 1-xxx-2 / 2-xxx-1 / 2-xxx-2	962918	1,500	963743	500	–	539757-2
> 2.5-4.0	–	2.7-3.7	1-xxx-1 / 1-xxx-2 / 2-xxx-1 / 2-xxx-2	962919	1,500	963744	500	–	

***) Material and Finish:**

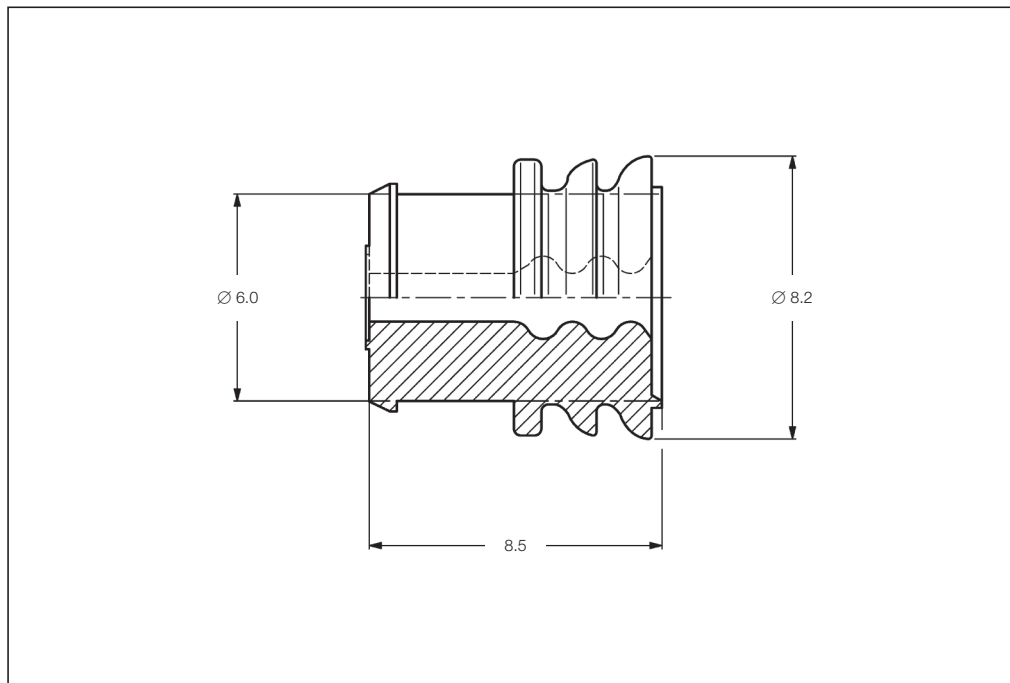
- 1-xxx-1 = CuSn, pre-tin plated
- 1-xxx-2 = CuSn, selective silver plated
- 2-xxx-1 = CuFe, pre-tin plated
- 2-xxx-2 = CuFe, selective silver plated

Remarks:

- ***) Hand Tool complete
- ***) Hand Tool for 2.5 mm²

Single Wire Seals and Sealing Plugs

**Single Wire Seals
and Sealing Plugs**



Insulation Diameter (mm)	Color	Part Number	Package Quantity
1.4–2.1	Blue	963243-1	2,500
2.2–3.0	White	963244-1	2,500
3.4–3.7	Yellow	963245-1	2,500
Sealing Plug	Black	100132-1	1,000

Engineering Notes

A large grid area for engineering notes, consisting of a uniform pattern of small squares. A solid black rectangular block is positioned on the left side of the grid, partially overlapping its edge.