

#### POWERTRAIN SYSTEMS



#### SAFETY & SECURITY SYSTEMS



#### CONVENIENCE



#### DRIVER INFORMATION



#### BODY & CHASSIS SYSTEMS



## AMP+ Charging Inlets

### INTRODUCTION

To charge their batteries, plug-in-hybrid and electric vehicles share the need to connect to the electrical infrastructure.

TE Connectivity's AMP+ charging inlets are a modular system, sharing identical parts between the three inlet types.

Priority was given to technical compatibility, allowing vehicle makers and system suppliers to fully harmonize functionality across their different Ranges.

TE offers a complete product range of compatible charging inlets for worldwide hybrid and electric vehicle applications.



### Technical Features

**Pin Number:**

5 pos

**Contact System:**

roundcontact

**Conductor Cross-Sections:**

0.75-1.00 mm<sup>2</sup> / 4.00 mm<sup>2</sup> /  
6.00 mm<sup>2</sup>

**Voltage Range:**

250V

**Operation Temperature:**

-30 °C and +50 °C

**Current Carrying Capacity:**

32A

**IP Rating:**

IP54 (front),

IP44 (rear)

**Cable Outlet:**

90° (can be rotated)

**Finger protected:**

Yes

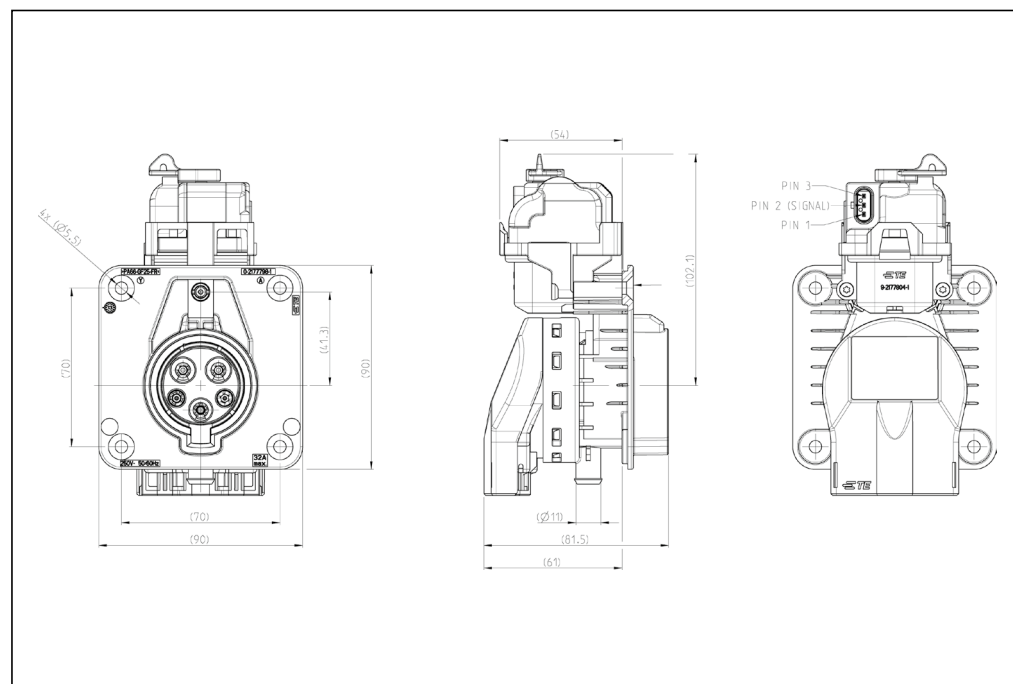
**Vibration Level:**

Level 2

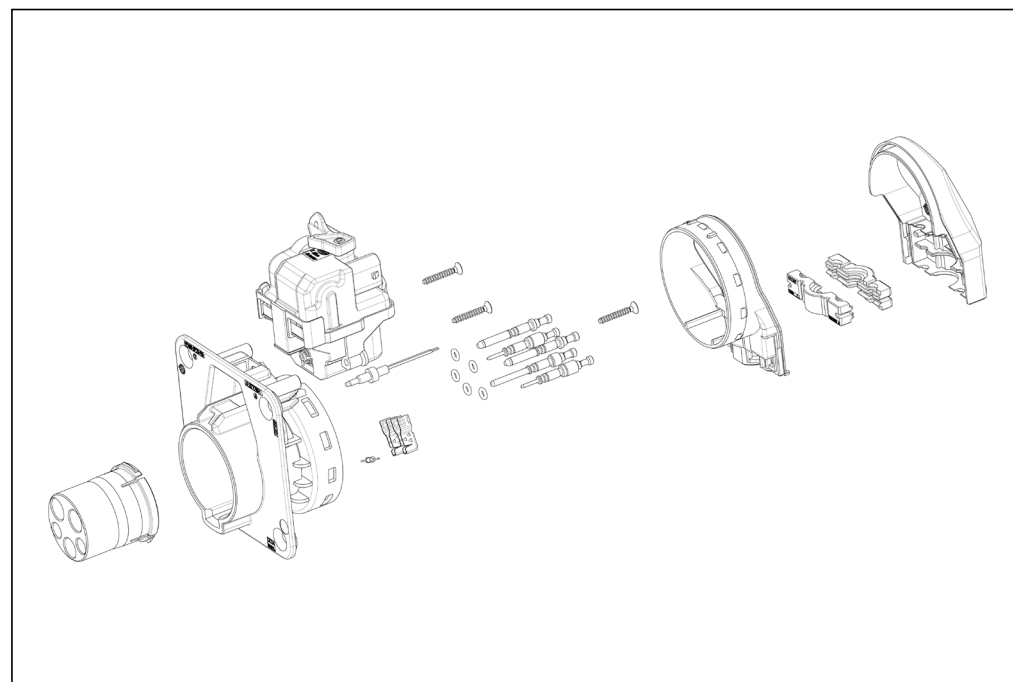
**Application Specification:**

114-94163-1

### AMP+ Charging Inlet Type 1



Drawing 114-94163-1 \*



\* Drawing Number is NOT the Order Number!



### Technical Features

**Pin Number:**

5-7 pos

**Contact System:**

roundcontact

**Conductor Cross-sections:**

0.75-1.00 mm<sup>2</sup> / 4.00 mm<sup>2</sup> /  
6.00 mm<sup>2</sup>

**Voltage Range:**

480V

**Operation Temperature:**

-30 °C and +50 °C

**Current Carrying Capacity:**

16/32A

**IP Rating:**

IP54 (front),

IP44 (rear)

**Cable Outlet:**

90° (can be rotated)

**Finger protected:**

yes

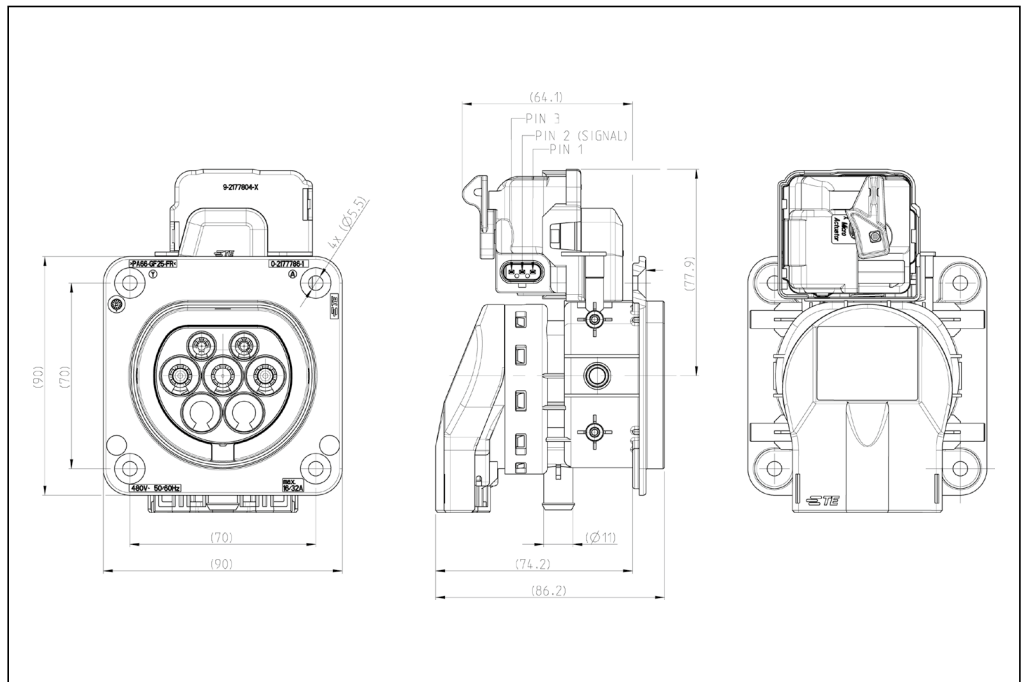
**Vibration Level:**

Level 2

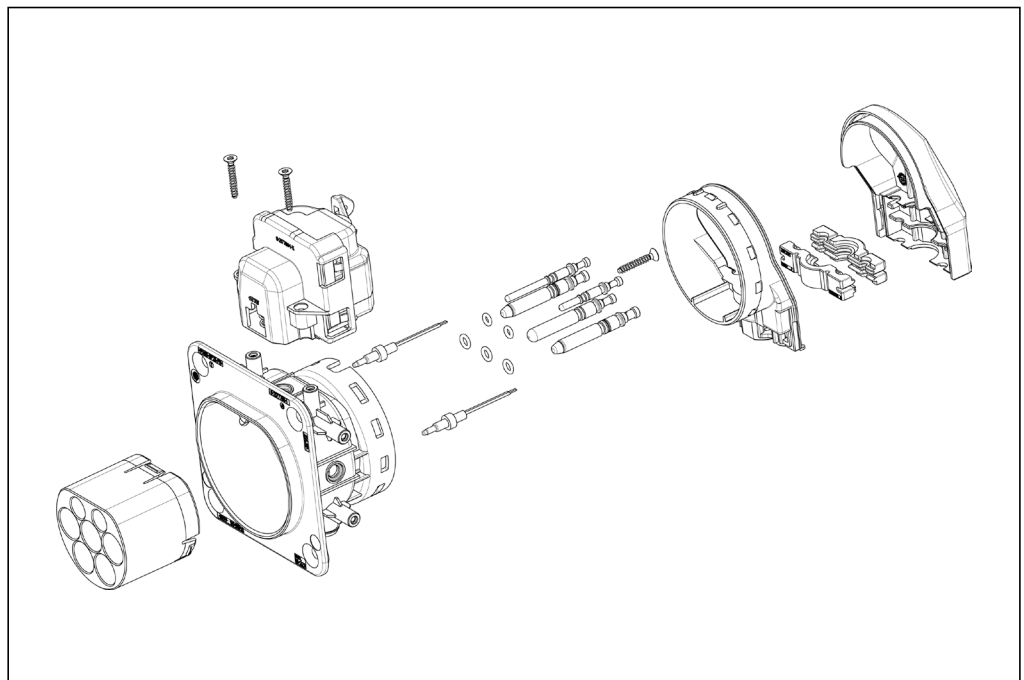
**Application Specification:**

114-94163-2

### AMP+ Charging Inlet Type 2



Drawing 114-94163-2 \*



\* Drawing Number is NOT the Order Number!



### Technical Features

**Pin Number:**

5-7 pos

**Contact System:**

roundcontact

**Conductor Cross-Sections:**

0.75-1.00 mm<sup>2</sup> / 4.00 mm<sup>2</sup> /  
6.00 mm<sup>2</sup>

**Voltage Range:**

440V

**Operation Temperature:**

-30 °C and +50 °C

**Current Carrying Capacity:**

16/32A

**IP Rating:**

IP54 (front),

IP44 (rear)

**Cable Outlet:**

90° (can be rotated)

**Finger protected:**

yes

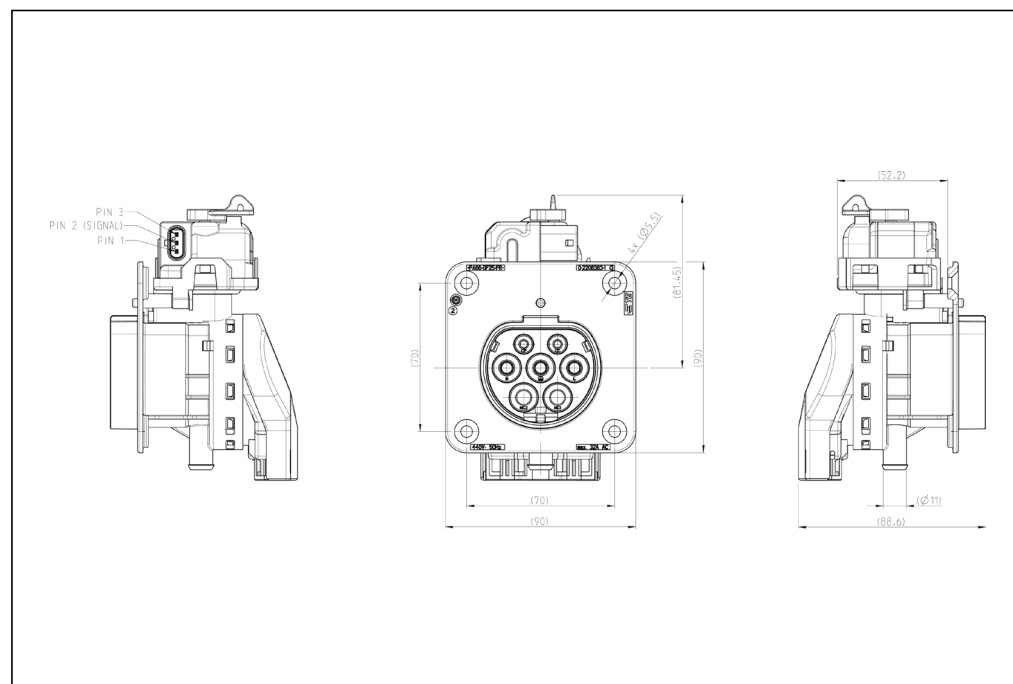
**Vibration Level:**

Level 2

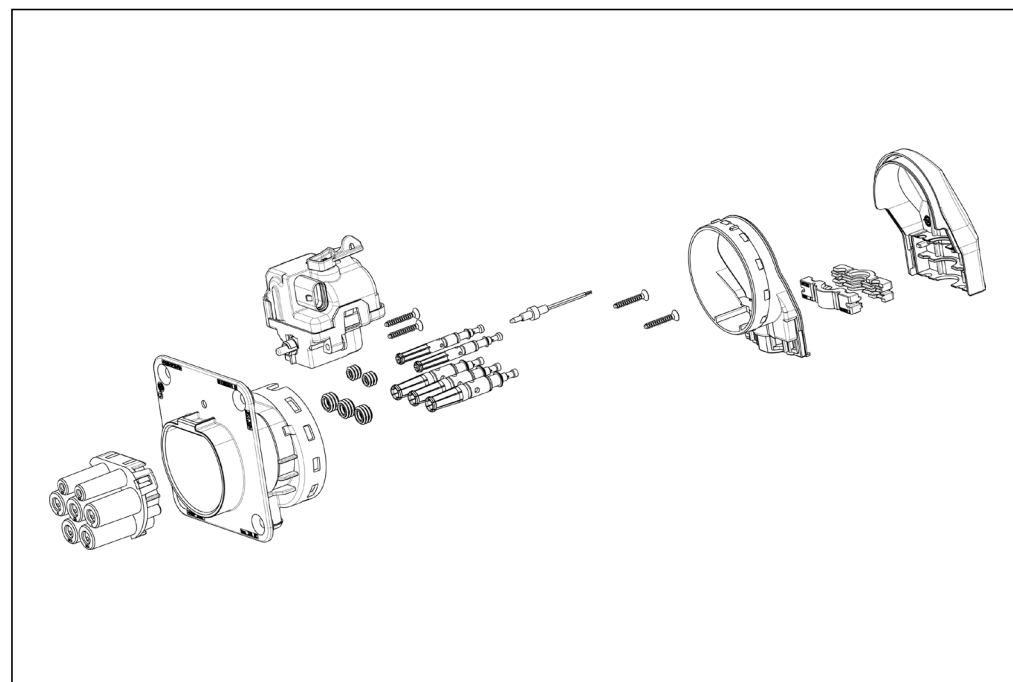
**Application Specification:**

114-94212

### AMP+ Charging Inlet Type GB



Drawing 114-94212 \*



\* Drawing Number is NOT the Order Number!